



# JELGAVA COUNTY

TOURISM GUIDE

# GET TO KNOW Jelgava County – a county in the middle of Latvia!

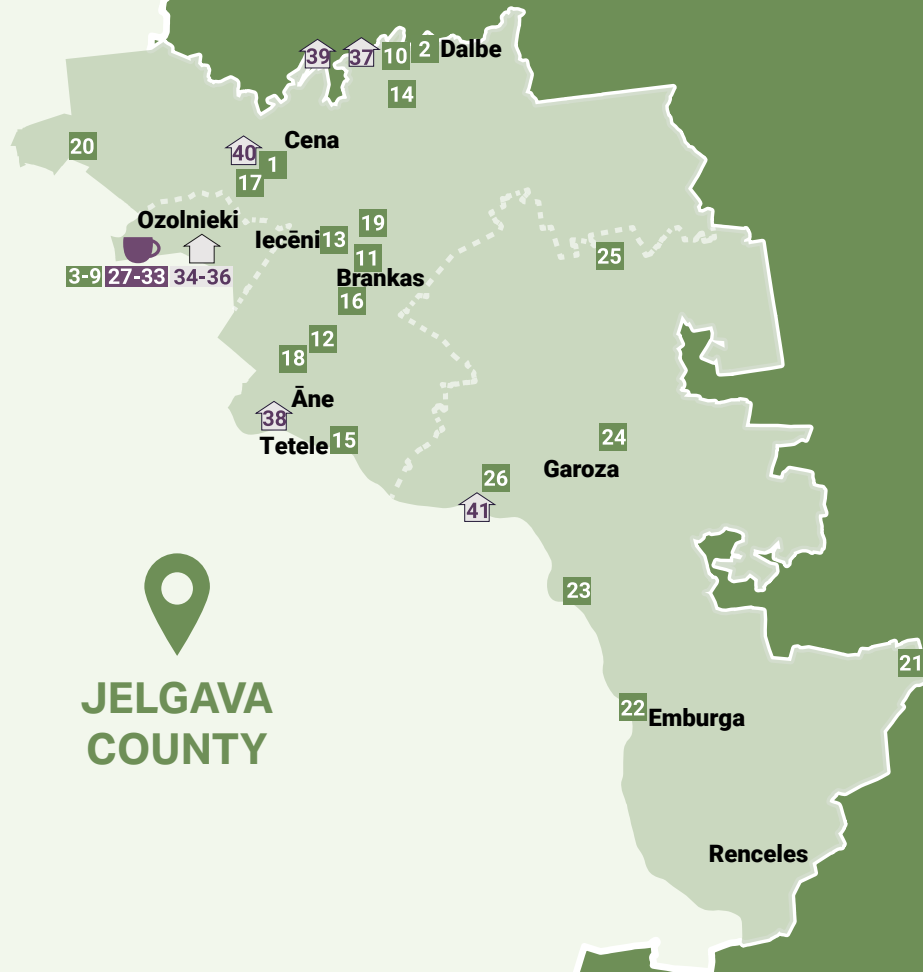
Immerse yourself in an adventure where nature and culture intertwine in a unique experience. Jelgava county - in the very heart of Latvia, both geographically and symbolically - is a place where you will feel the true soul of the land. From the vast fields of Zemgale, which turn green and golden in spring and summer, to **ANCIENT MANORS**, which keep stories about noble generations and historical events.

Jelgava County offers a cozy rural life with a cultural heritage rich in tradition. Visit **LOCAL HOME PRODUCERS**, who lovingly offer homemade delicacies - from freshly baked bread and golden honey to local crafts, which carries with it the power of Zemgale land.

During visiting Jelgava County, you will also find charming churches, that have preserved the spiritual heritage of the region through the centuries, enabling everyone to find **INNER PEACE**. Discover the charm of every parish in Jelgava County. There are 16 parishes arranged in the very middle of Zemgale's plains, forming one of the largest municipalities in Latvia. Jelgava County is more than just a place on a map - it is a county where traditions are cherished, and peaceful relaxation is a faithful companion.



# OZOLNIEKI, CENA, SALGALE parish



JELGAVA  
COUNTY

## 1 GOAT FARM "LĪCĪŠI"

The farm offers more than 200 goats, billy goats, different breeds of chicken and horses for visitors to see and cuddling the farm animals as well as listen to a story of farming, processing and marketing goat milk. You can try goat's milk, kefir, cheese and have a picnic.

📍 Cena parish, "Līcīši"

☎ +371 29322860, 26453155

🌐 [www.licisi.lv](http://www.licisi.lv)



## 2 "KĪPLOKU PASAULE" (GARLIC WORLD)

The story of the garlic products made on the farm, tasting of healthy and creatively prepared garlic products.

📍 Cena parish., Dalbe, Priežu street 8

☎ +371 29206015

🌐 [www.kiplokupasaule.lv](http://www.kiplokupasaule.lv)

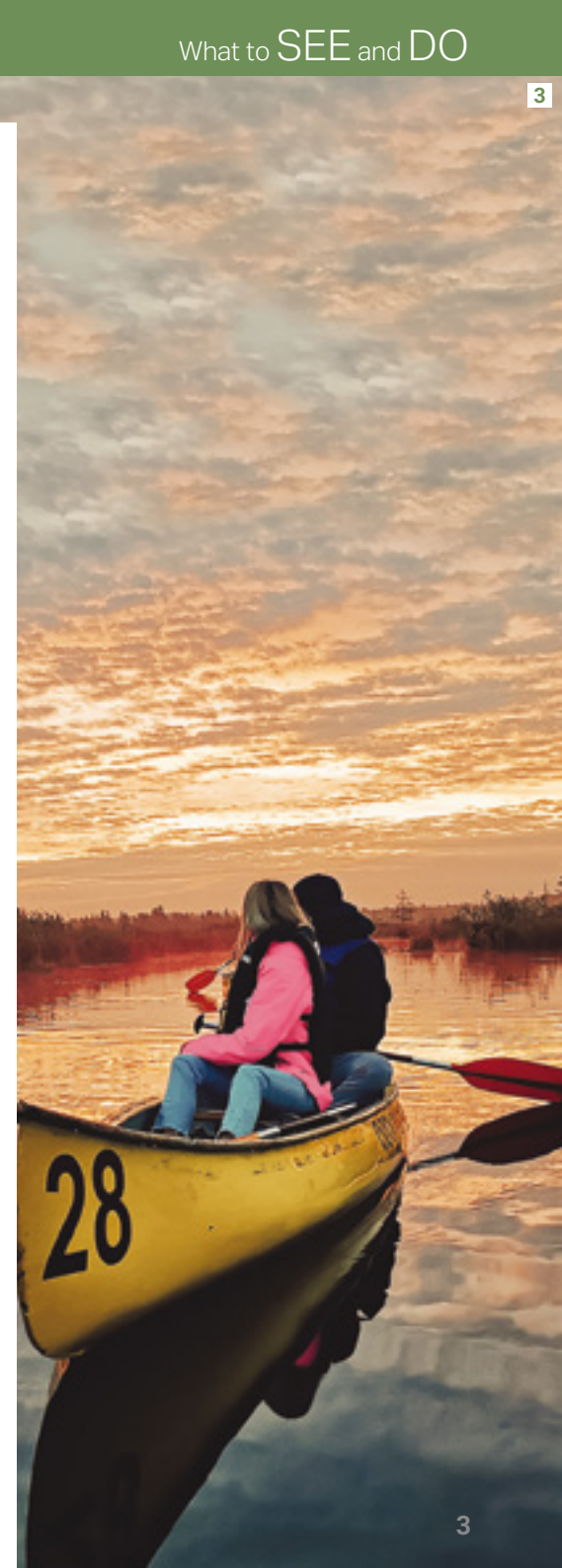
## 3 BOAT RENTAL AND TOURS "OZOLAIVAS.LV"

Boat rental and boat trips in Ķemeri Bog, Smārde Swamp, Lielupe, Misa, Iecava, Mūsa, Mēmele, Gauja, Lielā Jugla and other beautiful Latvian water basins.

📍 Ozolnieki, Kļavu street 6

☎ +371 23202900

🌐 [www.ozolaivas.lv](http://www.ozolaivas.lv)



**4 MASTI KVARTĀLS**

A place for active leisure and entertainment. Here you can climb the 18m high rock climbing wall, SUP boarding, water-skiing or wakeboarding in lake Ozolnieki as well as peacefully enjoy your meal at the "Masti Grill&Chill" restaurant.

📍 Ozolnieki, Kopiela 3

☎ +371 27844506 (events)

☎ +371 28366699 (wake park)

🌐 www.5masti.lv

**5 OZOLNIEKI HISTORY EXHIBITION**

The exhibition tells about important events and personalities in the history of the parish. An opportunity to learn about a sector related to the history of Ozolnieki - land reclamation, which includes personality, technical tools and job specifics.

📍 Ozolnieki, Stadiona street 10

☎ +371 29132901

**6 OZOLNIEKI HEALTH TRAIL**

A walk through the forest, exercise equipment, swings, ropes and a barefoot trail with 28 sectors made of different natural and building materials.

📍 Ozolnieki, Mika street 18

**7 BULDERBERGS HILL**

(Ozolnieki Hill) located in the territory of Ozolnieki Mežaparks, which in the snowy weather is filled with children's laughter. The little ones can enjoy the winter fun by sliding down the hill. In snowy weather, there is a 2.5 km ski slope, which is illuminated even in the evening hours.

📍 Ozolnieki, Ozolnieku mežaparks

**8 LTD. "ZIVJU ĪPAŠUMI"**

A great opportunity to enjoy your time on the water in kayaks. Although the kayaks are adapted for fishing, they can also be used by tourists.

📍 Ozolnieki, Iecavas krastmala 2-3

☎ +371 26650123

**9 SWEETS FACTORY "ABRA"**

Delicious, natural sweets and snacks. Only natural, high-quality raw materials are used in the production of goods. Exciting masterclasses for all ages and interests, making marmalades, sugar-free sweets and other treats.

📍 Ozolnieki, Meliorācijas street 2

☎ +371 29358736, 29824028

🌐 www.abrafoods.com

**10 CRENTAL OF TRANSPARENT BOAT AND PORTABLE HOT TUB/SAUNA**

Fully transparent boats, comfortable with adjustable double seats. Very light and nimble.

📍 Cena parish, Brankas, "Krausti"

☎ +371 26400224

**11 DALBE LUTERAN CHURCH**

The church was built from rocks, and is one of the most remarkable examples of late 19th-century neo-gothic style in Zemgale.

📍 Cena parish, Dalbe

☎ +371 28378341

**12 MINI ZOO "LAUKU SĒTA"**

A holiday walking site open to visitors on Saturdays and Sundays, from May to October. There is a chance to see farm animals - ponies, donkeys, llamas, dwarf goats, dwarf sheeps and various birds.

📍 Cena parish, "Jaunaudzēs"

☎ +371 27171712

🌐 www.zoolaukuseta.lv

**13 MEMORIAL SQUARE "LIGHT OF FREEDOM"**

A memorial with the story of the 1991 Barricades and a stylized bonfire symbolizing the light, the enthusiasm in people's hearts for the independence of the country, for the freedom of the nation.

📍 Cena parish, Brankas, (56.68583 23.83197)

**14 MONUMENT TO THE FALLEN SOLDIERS OF THE 6TH RIGA INFANTRY REGIMENT**

The monument is dedicated to the fallen and missing soldiers of the 6th Riga Infantry Regiment during the battles against the Bermontians on 17 November 1919.

📍 Near the Jelgava-Riga highway, formerly Skuju school, (56.72540,23.85236)

**15 TETELE (TETELMINDE) TOWER AND PARK**

Park, a tower of forged boulders stands on the banks of the Lielupe River.

📍 Cena parish, Tetele, Skolas street 10

**16 HORSE BREEDING FARM "PRINCIS"**

Horse farm tour, horseback and pony riding, riding lessons for adults and children.

📍 Cena parish, "Gaiļu stallis"

☎ +371 26563936, 20206039

**17 HORSE BREEDING FARM "MAZMUŠĶU ZIRGI"**

A sightseeing attraction with possibility to pet and feed horses.

📍 Cena parish, "Mazmušķi"

☎ +371 29140535, 29552446



**18 PONIES FOR EVENTS "PONIJI.LV"**

Stall with trained ponies, offering activities for children and adults, on site and on outings.

- 📍 Cena parish, "Vīksnes"
- ☎ +371 25523374
- 🌐 www.poniji.lv



19

**19 BRANKAS BRANCH PLACE**

Spacious rooms for your celebrations and work. Glass walls fill the rooms with daylight while conjure up romance in the evenings.

- 📍 Cena parish, Brankas, Saules street 2
- ☎ +371 27722552
- 🌐 www.biedribatuvu.lv

**20 NATURAL COSMETICS FACTORY "GREEN WING"**

Natural cosmetics made by using our natural resources - herbs, natural oils, ointments, extracts, clays, sea salt, etc. During your visit, you can learn about the products as well as the story of the producer. In the warm season, you can also visit the herb garden. Visitors can make cosmetic products.

- 📍 Cena parish, Ievu street 4a
- ☎ +371 26659371
- 🌐 www.ziedudens.lv

**21 MEMOREAL MUSEUM OF E. VIRZA UN E. STĒRSTE "BILLĪTES"**

The home of poets, where many poems were written and E.Virza's the most notable work "Straumēni" have been created.

- 📍 Salgale parish, "Billītes"
- ☎ +371 29299790

**22 EMBURGA HEALTH TRAIL**

The health trail with exercise equipment is ~0.4km long. The landscaped area is available for sports, active recreation or just walking in the fresh air.

- 📍 Salgale parish, Emburga, (56.56951,23.97997)

**23 JĀŅA ČAKSTES MĀJA**

House of J.Čakste - The family home of Jānis Čakste, the first President of Latvia, where an exhibition is housed, which in a modern, contemporary format tells about the fate of the first President of Latvia and his family in the context of Latvian history and the development of democracy.

- 📍 Salgale parish, "Auči"
- ☎ +371 26392154
- 🌐 www.cakstesmaja.com



23

**24 TREE NURSERY "BĒTRAS"**

A nursery tour, tasting of dried local fruits/berries and syrups.

- 📍 Salgale parish, "Bētras"
- ☎ +371 26388251
- 🌐 www.betras.lv

**25 PRIVATE COLLECTION OF SOVIET TIME CLOCKS "PULKSTEŅU MĀJA"**

Impressive private collection, which has more than 300 pieces – alarm clocks, table fireplace clocks, cuckoo clocks and wall clocks.

- 📍 Salgale parish, "Purviņi 22"
- ☎ +371 26379730

**26 VAREĻU MONUMENT**

The monument is dedicated to the 14 cadets of the Latvian Military School who fell in the battles against Bermont's troops in November 1919.

- 📍 Salgale parish, (56.62384,23.90948)

**27 Restaurant & Grill Bar Masti Grill & Chill**

- 📍 Ozolnieki, Ozolnieku lake, "Ezerkrasti"
- ☎ +371 23884400, 🌐 www.mastigrill.lv

**28 Kebaberia "Korner kebab"**

- 📍 Ozolnieki, Meliorācijas street 2
- ☎ +371 28122288

**29 Pizzeria "Picburg"**

- 📍 Ozolnieki, Stadiona street 5b
- ☎ +371 22330030, 🌐 www.ozo.picburg.lv

**30 Lunch restaurant "Centrs"**

- 📍 Ozolnieki, Rīgas street 34
- ☎ +371 28802301

**31 Bar "Meka"**

- 📍 Ozolnieki, Stadiona street 5a
- ☎ +371 29444403, 🌐 www.meka.lv

**32 "Coffee STOP"**

- 📍 Ozolnieki, Skolas street 4c
- ☎ +371 26542949

**33 Foodstacija.lv**

- 📍 Ozolnieki, Gobas street 9
- ☎ +371 25318888, 🌐 www.foodstacija.lv



32

**36 Hostel "Ozolnieki sports centre"**

- 📍 Ozolnieki, Stadiona street 5
- ☎ +371 29604712, 22319100, 63050516
- 🌐 www.ozolniekusportaskola.lv

**37 Leisure complex "Vīksnas"**

- 📍 Cena parish "Vīksnas"
- ☎ +371 26545412

**38 Holiday house "Ānes muiža"**

- 📍 Cena parish, Āne
- ☎ +371 26483712
- 🌐 www.anesmuiza.lv

**39 Guest house "Saulgrieži"**

- 📍 Cena parish, "Saulgrieži"
- ☎ +371 26542202
- 🌐 www.projektsmaja.lv

**40 Glamping Goat farm "Līcīši" (open seasonally)**

- 📍 Cena parish, "Līcīši"
- ☎ +371 29322860; 26453155
- 🌐 www.turisms.lv/licisi

**41 Camping "Cīzeri"**

- 📍 Salgale parish, "Šalkoņi"
- ☎ +371 29477317



34

**34 "Agate hotel"**

- 📍 Ozolnieki, Skolas street 16
- ☎ +371 25661811
- 🌐 www.agatehotel.lv

**35 Hostel "Latvian Rural advisory and training centre"**

- 📍 Ozolnieki, Rīgas street 34
- ☎ +371 28337799
- 🌐 www.llkc.lv



  
**JELGAVA COUNTY**

# JAUNSVIRLAUKA, VIRCAVA, PLATONE AND SVĒTE parish



1

## 1 OUTDOOR AMUSEMENT PARK "LĪČU GANĪBAS"

Active recreation for families with children, kid's amusement park, tractor train, disc-golf track, picnic areas and cafe.


 Jaunsvirlauka parish, "Viesu līči"

 +371 29558144, 20455402

 [www.zemniekacienasts.lv](http://www.zemniekacienasts.lv)

## 2 MOTORCYCLE RIDE JAWA WITH A SIDECARM


Ride with a completely re-newed 80th year JAWA motorcycle with a sidecar. An experienced biker will drive you through the streets of Jelgava or it's surroundings. You can also arrange this motorcycle for photo shoots

 Jaunsvirlauka parish, cafe "Zemnieka cienasts"

 +371 29486086

## 3 PRODUCTION OF ROASTED BEANS "PUPUCHI"

Production of healthy snacks from broad beans, tasting and practical activities.

 Jaunsvirlauka parish, Dzirnieki, levu street 12

 +371 26171549

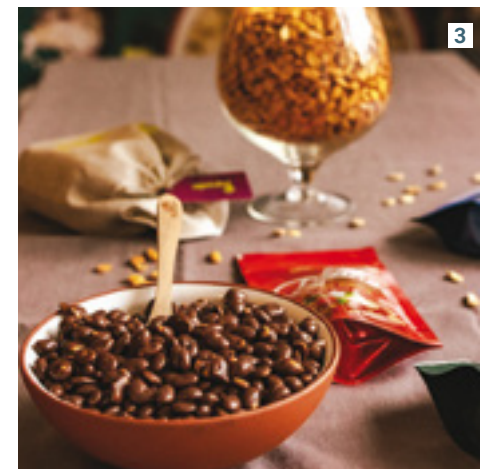
 [www.pupuchi.lv](http://www.pupuchi.lv)

## 4 CRAFT CENTRE "JAUNLĪDUMI"

An opportunity to learn more about leatherworking and, by prior arrangement, to take part in practical classes led by master craftsmen.

 Jaunsvirlauka parish, Dzirnieki, levu street 12

 +371 26383129, 29199324



3

**5 APPLIED ART STUDIO "STAĻĢENE"**

You can watch professional weavers at work, take part in the process and place orders.

📍 Jaunsvirlauka parish, Staļģene,  
Lielupes street 5  
☎ +371 28674293

**6 STAĻĢENE MANOR**

Modern manor house built in the 18th century. There is an exposition of Jaunsvirlauka parish local history, in the park there is a circle of Latvian annual traditions.

📍 Jaunsvirlauka parish, Staļģene,  
Skolas street 4  
☎ +371 26383129, 29199324

**7 RASPBERRY FARM "MŪSU AVENES"**

Enjoy educational and interactive tours around the farm, where a dome tent in the raspberry field will create a special atmosphere. Tastings of farm products. Picnic area and wedding staging area available.

📍 Vircava parish, Jelgavas street 19  
☎ +371 26754750, 28374058  
🌐 www.auguspeks.lv

**8 BEEKEEPING FARM "LĪGAS MEDUS"**

Visit the apiary, observe bee life, work in the apiary and taste beekeeping products.

📍 Vircava parish, "Mucenieki"  
☎ +371 26189710, 29110940  
🌐 www.ligasmedus.lv

**9 MUIŽAS ISTABAS (MANOR ROOMS)**

A place for celebrations, people, art and music. A chance to see the treasures of the house, hear the story of the manor family, enjoy music and taste the hunger cake baked according to the ancient recipe. Masterclasses on making pearl crowns and linen jewellery.

📍 Vircava parish, Beiku road 1  
☎ +371 28341486  
🌐 www.muizasistabas.lv

**10 TOMATO FARM "DZĒRVES"**

For more than 20 years, tomato growing has been the main branch of the farm - approximately 40 various tomato varieties are grown here. Guided farm tours, product tasting and purchase.

📍 Vircava parish, "Dzērves"  
☎ +371 29639942, 28377370

**11 VIRCAVA MANOR COMPLEX AND PARK**

A visit to the manor complex and the historic baroque-style park. Currently, the former manor buildings house the Vircava Parish Community Centre and the Vircava Primary School.

📍 Vircava parish, Jelgavas street 2

**12 BEE AND QUINCE GARDEN IEVGRAVAS**

A garden where bees and quinces are grown with love and care. Educational tours and exciting games about beekeeping and quince cultivation, as well as tastings of various products.

📍 Vircava parish, Vircava, Platones street 16  
☎ +371 26473880  
🌐 www.ievgravas.lv

**13 NATURAL COSMETICS WORKSHOPS AT "DĀRZIŅI-2"**

The farm makes natural cosmetics from plants grown on the farm. Guests can listen to a lecture and make cosmetics from plants of their choice.

📍 Platone parish, "Dārziņi"  
☎ +371 26445730

**14 ĢEDERTS ELIASS FAMILY HOUSE "ZĪLĒNI"**

The family home of painter Gederts Eliass tells the story of the artist brothers Kristaps and Ģederts. Here you will see reproductions of paintings by Ģ.Eliass, and delights with the landscape of Zemgale.

📍 Platone parish, Poķi  
☎ +371 26547117, 26565337

**15 LIELVIRCAVA LUTHERAN CHURCH**

The oldest stone church in Jelgava County, built in 1595 with the funds of the owner of Lielvircava manor, Barons Klopman.

📍 Platone parish, Lielvircava,  
(56.51004,23.75567)  
☎ +371 29723404

**16 LIELVIRCAVA MANOR**

The manor house was built in the 19th century. The interior is complemented by a gift to the manor from a descendant of the Klopman family - 19th century manor furniture and household items. Guided tours are available.

📍 Platone parish, Lielvircava,  
(56.52186,23.75693)  
☎ +371 22024127



**17 TREE AND PLANT NURSERY "DIMZAS"**

A family-run business that deals with landscaping, plant growing and floristry supplies. Visit the arboretum, the water lily pond and the nursery.

- 📍 Platone parish, "Dimzas"
- ☎ +371 29217829
- 🌐 www.dimzas.com

**18 CERAMIC WORKSHOP IN SVĒTE**

In the ceramics workshop you can learn about the pottery, get involved in the work process, buy ceramic products, and place an order. It is possible to celebrate events and take part in masterclasses.

- 📍 Svēte parish, Lielsvētes street 18 / K-1
- ☎ +371 26003899



**19 MONUMENT TO THE LIBERATORS OF JELGAVA**

The monument to Daugavgrīva Guardsmen was unveiled in 1991 at Svēte School for their bravery in stopping German attack on Jelgava.

- 📍 Near Svete Primary School, Svēte parish, Vilces street 6

**20 ARBORETUM "VILKI"**

It is a small, green oasis in the middle of Zemgale's vast cereal fields. Here you can take an informative tour through the arboretum and the farm area, getting to know about 1000 different plants - both typical for the Latvian landscape and quite peculiar.

- 📍 Svēte parish, "Vilki"
- ☎ +371 26153697, 28378543



**21 PINE CONE PRODUCTION MĪTAVAS ČIEKURS**

Here, delicious and immune-boosting products are made from Pinus Sylvestris L. pines. Educational tours of the cone mill and fun stories about the experience.

- 📍 Svēte parish, Atpūta, Bērzu street 2
- ☎ +371 28469842
- 🌐 www.mitavasciekurs.lv

**22 SVĒTE CLUB**

The place to celebrate holidays and organise events. The premises can accommodate up to 100 guests.

- 📍 Svēte parish, Vilces street 8
- ☎ +371 28730584, 26532866
- 🌐 www.svetesklubs.lv

**23 SVĒTE CASTLE**

Built in the 18th century as the residence of Duke Peter Byron of Courland. Restoration works are currently underway. You can enjoy the surroundings from the gazebo located on the riverside.

- 📍 Svēte parish, Lielsvētes street 18 / K-1
- ☎ +371 22035461

**24 ZELT SEA BUCKTHORN GARDEN**

When you visit the ZELT sea buckthorn garden you will be offered: a guided tour on the cultivation and uses of sea buckthorn, tasting and trying out the products; masterclasses in cooking or natural cosmetics; rooms and garden area for parties, concerts and other events.

- 📍 Platone parish, ZELT smiltsērķšķu dārzs
- ☎ +371 27828017
- 🌐 www.zelt.bio

**25 Cafe-restaurant "Zemnieka cienasts"**

- 📍 Jaunsvirlauka parish, Rīga-Šauļi 43km
- ☎ +371 20455402
- 🌐 www.zemniekacienasts.lv

**26 Svēte club**

- 📍 Svēte parish, Vilces street 8
- ☎ +371 28730584, 26532866
- 🌐 www.svetesklubs.lv



**27 Vecīču pirts**

- 📍 Jaunsvirlauka parish, "Senlīči"
- ☎ +371 20007065, 29486086, 🌐 www.senlici.lv

**28 Hotel "Senlīči"**

- 📍 Jaunsvirlauka parish, "Senlīči"
- ☎ +371 20007065, 29486086, 🌐 www.senlici.lv

**29 Guest house "Galzemji"**

- 📍 Jaunsvirlauka parish, "Galzemji"
- ☎ +371 29188408

**30 Guest house "Villa Rose&SPA"**

- 📍 Jaunsvirlauka parish, Mežciems, Rožu street 19
- ☎ +371 25900748, 🌐 www.villarose.lv

**31 Conference and recreation complex-hotel "LIZARI village"**

- 📍 Vircava parish, "Lizari"
- ☎ +371 20375375
- 🌐 www.lizari-conference.com, www.lizari.org

**32 Recreation complex "Grantiņi" (open seasonally)**

- 📍 Svēte parish, "Grantiņi 1"
- ☎ +371 28602267
- 🌐 www.grantinicamp.lv

**33 Guest house "Mežkakti"**

- 📍 Svēte parish, "Mežkakti"
- ☎ +371 26023294

**34 Summer house "Žubīte"**

- 📍 Svēte parish, "Dzedonas"
- ☎ +371 28376446, 26532866

**35 Accommodation "Svētes klubs"**

- 📍 Svēte parish, Vilces street 8
- ☎ +371 28730584, 26532866
- 🌐 www.svetesklubs.lv

**36 Hostel Sili**

- 📍 Jaunsvirlauka parish, Mežciems, Liepu street 8
- ☎ +371 24807777
- 🌐 www.hostelsili.lv







JELGAVA COUNTY

LIELPLATONE, VILCE, ELEJA, SESAVA parish



3

**1 LIELPLATONE MANOR AND LAUNDRY HOUSE (VEŠŪZIS)**

The manor was established in the 19th century. The manor complex includes several auxiliary buildings and a big park. In the restored authentic laundry building of the 18/19th century, an exploratory program of the laundry traditions is offered. One of the largest private collections of bells in Europe (Mr. Valdis Jēkabsons collection).

📍 Lielplatone parish, Alejas street 7  
☎ +371 26611468



1

**2 LIELPLATONE SCHOOL SPORTS TRAIL TĪSI**

The tranquility of the forest, bird songs, and immeasurable amount of fresh air. Perfect for peaceful walks or more active recreation.

📍 Lielplatone parish, Lielplatones school

**3 SHIITAKE MUSHROOM FARM TRUBENIEKI**

Excursions around the farm, degustation of fresh shiitake, soup made of mushrooms and other products.

📍 Lielplatone parish, "Trubenieki"  
☎ +371 26135555

**4 FARM "VĀRPAS"**

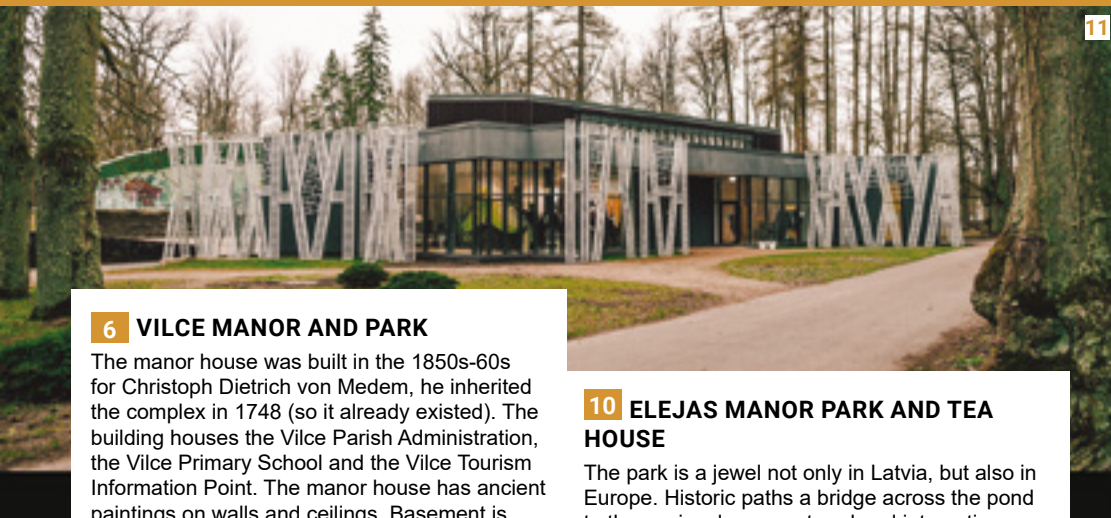
A green-minded family. Vegetable growers and home producers. During the tour you can taste the products, hear the story - how it all started and where we are now. You can also see the production processes. Lunch is also available at Lielplatone Manor.

📍 Lielplatone parish, Alejas street 17  
☎ +371 29762214, 20374387

**5 BLANKENFELDE MANOR**

The manor complex was built 18th century. Tours of the manor complex. Possibility to organise events. Manor garden fruit and elderberries tree production tastings.

📍 Vilce parish, Blankenfelde  
☎ +371 26490272  
🌐 www.blankenfeldemanor.com



## 6 VILCE MANOR AND PARK

The manor house was built in the 1850s-60s for Christoph Dietrich von Medem, he inherited the complex in 1748 (so it already existed). The building houses the Vilce Parish Administration, the Vilce Primary School and the Vilce Tourism Information Point. The manor house has ancient paintings on walls and ceilings. Basement is available for visitors.

### DISC GOLF

In the scenic park of Vilce manor, Disc golf tournaments can be organized, because there are 12 baskets all over the park. Disc golf discs can be rented at the Vilce Tourist Information Point, by prior arrangement on the phone.

📍 Vilce parish, Vilces manor  
☎ +371 26351169

## 7 MONUMENTS TO THE BATTLE OF MŪRMUIŽA AND FOR SWEDISH SOLDIERS

The Mūrmuiža battle took place on July 16, 1705, during the Great Northern War, along the banks of the Svēte river, near Mūrmuiža.

📍 Vilce parish, (56.43012,23.52855)

## 8 PEPPERMINT PRODUCTS PIPARMĒTRU NAMIŅŠ

Enjoying peppermint tea with other products made from peppermint, creative workshops.

📍 Vilce parish, "Terēni"  
☎ +371 26394062, 29340613  
🌐 www.piparmetras.lv

## 9 VILCE MANOR CERAMICS WORKSHOP

Classes with a ceramics master from the Latvian Chamber of Crafts. Making different types of clay vessels and decorations

📍 Vilce parish, Skolas street 6  
☎ +371 26696222

## 10 ELEJAS MANOR PARK AND TEA HOUSE

The park is a jewel not only in Latvia, but also in Europe. Historic paths a bridge across the pond to the peninsula are restored and interactive objects are set - sculpture "For Love" by sculptor Gleb Pantelejevs and environmental object "Conversation", allowing people to talk on both sides of the pond.

📍 Eleja parish, Eleja (56.42539,23.69990)  
☎ +371 26128853

## 11 ELEJAEXHIBITION HALL "ELEJAS MUIŽAS SKATPUNKTĪ" (VIEWPOINTS OF THE ELEJA MANOR)

The exhibition hall is located in the park of Eleja Manor, surrounded by tall trees. Visitors can discover historical facts about the Eleja Manor complex, the manor park and the restored Tea House in an interactive way.

📍 Eleja parish, Eleja (56.42568,23.70050)  
☎ +371 26128853

## 12 SOUVENIR COLLECTION FROGS HOUSE

Private collection of souvenirs, wich displays more than 2000 figurines of frogs from different parts of the world.

📍 Eleja parish, "Indrāni"  
☎ +371 28609853

## 13 SESAVA LUTHERAN CHURCH

The stone church, was built in 1633. In the church, you can see altar painting The Ascension of Christ (1860) and the organ with 25 registers that was built in 1860.

📍 Eleja parish, (56.42194,23.73149)  
☎ +371 29418944

## 14 ELEJA WAR HISTORY MUSEUM

The exhibition is dedicated to the history of Eleja parish, the Latvian army, the First and Second World War and national partisans. The museum collects, documents and researches cultural and historical value.

📍 Eleja parish, Stacijas street 1  
☎ +371 26864722

## 15 FAMILY FARM BLŪDŽĪ

Tastings of unripened cheese, bread, vegetable salads and preserves made at the farm.

📍 Sesava parish, Bērvircava  
☎ +371 27114820  
🌐 www.malkalnusieri.mozello.lv



## 16 CAVACO WEAVING WORKSHOP SMILGUMI

A basket-weaving demonstration and masterclass (one of the oldest ways of basket weaving).

📍 Sesava parish, Bērvircava, Liepu street 7  
☎ +371 25943982

## 17 MINI ZOO "MŪSU ZOO"

A wonderful place to see and feed different animals. Offers of participation with animals at various events.

📍 Sesava parish, "Ābelītes"  
☎ +371 27729394, 26128383

## 18 Kafejnīca "Gardi"

📍 Eleja parish, Bauskas street 3  
☎ +371 26866206

## WHERE TO STAY



## 19 Blankenfelde manor

📍 Vilce parish, Blankenfelde  
☎ +371 26490272  
🌐 www.blankenfeldemanor.com

## 20 Berķene manor

📍 Vilce parish, Ziedkalne, Berķene manor  
☎ +371 29252565, 29228580  
🌐 www.berkenesmuiza.lv

## 21 Guest house "Upmaļi"

📍 Vilce parish, "Upenieki"  
☎ +371 29237149  
🌐 www.upmali.lv

## 22 Brūveru klēts

📍 Vilce parish, Ziedkalne, "Brūveri"  
☎ +371 29432198  
🌐 www.bruveruklets.lv

# ZAĻENIEKI, GLŪDA parish



## 1 OSTRICH FARM "MAZZARIŅI"

One of the biggest ostrich farms in Latvia. A chance to see and learn about the biggest birds on the planet - the African ostrich, the Australian emu and the South American nandu. Souvenirs made from bird eggshells and feathers.

📍 Glūdas parish, "Mazzariņi"  
☎ +371 27178050

## 2 NĀKOTNES PARKS – A PLACE OF ADVENTURE AND INSPIRATION

Vintage objects, old aircraft, retro motorbike collection, cereal tasting, accommodation, scenic apple orchard.

📍 Glūdas parish, Nākotne, "Industriālais parks"  
☎ +371 25713949, 🌐 www.nakotnesparks.lv

## 3 GARIE KALNI (LONG HILLS) BŪRIŅU FOREST

Walk through the pine labyrinths in Būriņu Forest! For the observant a chance to meet someone from the forest animal or see the great pine of Siliņi with the girth of 3.4 meters. Enjoy walking, jogging, Nordic walking or cycling.

📍 Glūda parish, (56.62700,23.65248)

## 4 NĀKOTNE WALKING TRAIL

The nature trail along the bank of the river Auce is 1.5 km long. Here is a place for picnic. The trail includes a watchtower that provides good view for bird watchers. It is an excellent choice for fishing.

📍 Glūda parish, Nākotne, (56.61778,23.44822)

## 5 SUP RENTAL

Great entertainment anywhere, anytime. All you must do is pick up your inflatable SUP board and go wherever your heart desires.

📍 Glūda parish, Nākotne, Auces street 3  
☎ +371 27277588  
🌐 www.lieliskaballite.lv



## 6 TRUFFLE GARDEN

Truffles are grown here, produces honey with truffles and other unusual flavours. Educational experience stories, tours, tastings and masterclasses.

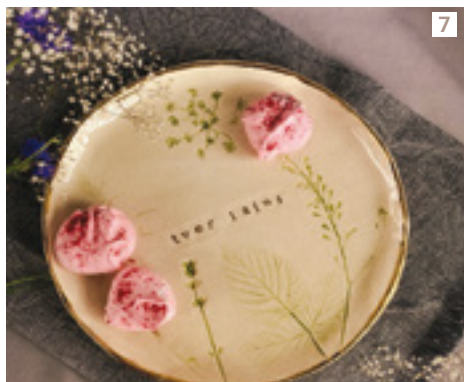
📍 Glūda parish, "Rasas"  
☎ +371 26630949, 28667950  
🌐 www.truffland.com



## 7 CERAMICS WORKSHOP "UKU CERAMICS"

Modern handmade clay and stone mass utensils, made with love. Enjoy a creative ceramics masterclass and create your own cute, unique bowl.

📍 Glūda parish, Nākotne, Tomsona street 13  
☎ +371 26590866  
🌐 [www.ukuceramic.com](http://www.ukuceramic.com)



## 8 ABGUNSTE MANOR

A residence of creativity, a house to live in, a place to celebrate life. Abgunste Manor is a hidden treasure, with hundreds of stories and thousands of years of power. Built on seven sacred sites, the manor house is a place of truth and creativity, where previously unseen sensations can be restored.

📍 Zaļenieki parish, Abgunste  
☎ +371 29393131, 28373711  
🌐 [www.abgunste.lv](http://www.abgunste.lv)



## 9 TREE NURSERY "ZAĻENIEKU KOKAUDZĒTAVA"

Arboretum tour, open to the public. Possibility to organize weddings, photo sessions.

📍 Zaļenieki parish, Kokaudzētavas street 1  
☎ +371 29410756

## 10 ZAĻENIEKI (GREEN) MANOR

A unique example of 18th century architecture. Today, there is Zaļenieki Commercial and Crafts Secondary School, in the manor complex

📍 Zaļenieki parish, "Pils"  
☎ +371 22043531, 🌐 [www.zav.lv](http://www.zav.lv)



## 11 (ZAĻENIEKI) EVANGELICAL LUTHERAN CHURCH

The construction of the stone church was completed in 1872. A tour and a story telling about the history of the congregation, Aspazija, Andrejs Stersts, Countess Alexandrina Medema and her daughter and the opportunity to listen to the sound of the pipe organ.

📍 Zaļenieki parish, (56.52987, 23.49637)  
☎ +371 26747240, 26137247

## 12 Restaurant "Pūtelkrogs"

📍 Zaļenieki parish, "Pūteļu krejotava"  
☎ +371 63011900, 29255010, 🌐 [www.puteli.lv](http://www.puteli.lv)



## 13 Holiday house "Ceriņi"

📍 Glūda parish, Nākotne, "Industriālais parks"  
☎ +371 25713949  
🌐 [www.nakotnesparks.lv](http://www.nakotnesparks.lv)

## 14 Tree house "Namiņš kokos"

📍 Glūda parish, Ūdeļu street 1  
☎ +371 29377105

## 15 Accommodation "GAZ-63" (open seasonally)

📍 Glūda parish, Nākotne, "Industriālais parks"  
☎ +371 25713949  
🌐 [www.nakotnesparks.lv](http://www.nakotnesparks.lv)

## 16 Guest house "Laukmaļi"

📍 Glūda parish "Laukmaļi"  
☎ +371 26116643

## 17 Holiday house "Pūpoli"

📍 Glūda parish, Nākotne, "Industriālais parks"  
☎ +371 25713949  
🌐 [www.nakotnesparks.lv](http://www.nakotnesparks.lv)

## 18 Abgunste manor

📍 Zaļenieki parish, Abgunste  
☎ +371 29293131, 28373711  
🌐 [www.abgunste.lv](http://www.abgunste.lv)



## 19 Recreation and nature complex "Kaupēna dzirnavas"

📍 Zaļenieki parish, "Kaupēna dzirnavas"  
☎ +371 29263768, 26551259  
🌐 [www.kaupena-dzirnavas-1.mozello.lv](http://www.kaupena-dzirnavas-1.mozello.lv)

## 20 Guest house "Vijas"

📍 Zaļenieki parish, "Vijas"  
☎ +371 26495564

## 21 Hotel-guest house "Pūtelkrogs"

📍 Zaļenieki parish, "Pūteļu krejotava"  
☎ +371 63011900, 29255010  
🌐 [www.puteli.lv](http://www.puteli.lv)

## 22 Dormitory of Zaļenieki Commercial and Crafts Secondary School

📍 Zaļenieki parish, Baznīcas street 2  
☎ +371 29273809  
🌐 [www.zav.lv](http://www.zav.lv)

# KALNCIEMS, VALGUNDE, LĪVBĒRZE parish



**JELGAVA  
COUNTY**



## 1 LOŽMETĒJKALNS WATCHTOWER

A symbol and a memorial to heroism of Latvian Riflemen, a unique witness to the battles fought during World War I. 27 meter high observation tower.

📍 Valgunde parish, (56.86571,23.65917)



## 3 THE BRANCH OF THE RIGA HOLYTRINITY SERGIY WOMEN'S MONASTERY (VALGUNDE MONASTERY)

The monastery was built in the end of 19th century and is active also nowadays. Here you can see Jesus Christ's Transfiguration Orthodox Church, J. Trepnieks Church and Chapel.

📍 Valgunde parish, (56.73375,23.69451)  
☎ +371 63085215, 63085244

## 4 LĪVBĒRZE CATHOLIC CHURCH

The only wooden church in Jelgava county, built in 1684. The interior of the church contains artistic heritage of national value from the 17th and 18th centuries.

📍 Līvberze parish, (56.70388,23.45459)  
☎ +371 26466355

## 2 CHRISTMAS BATTLES MUSEUM

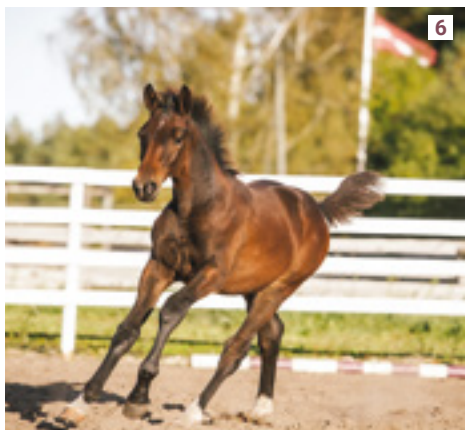
The World War I historical site where the legendary Christmas Battles took place. Educational excursions, lessons and other activities by prior reservation.

📍 Valgunde parish, "Mangalji"  
☎ +371 28349259, 67228147  
🌐 www.karamuzejs.lv

## 5 AMBER PRODUCTION "LIVONIJAS DZINTARS"

A handicraft company producing cosmetics, ointments, and jewellery from Baltic amber. A story about the healing effects of amber, tasting of ice cream with amber powder.

📍 Kalnciems parish, Kalnciems, Lielupes street 75  
☎ +371 29436594  
🌐 www.livonijasdzintars.lv



6

### 6 HORSE RIDING PLACE "TĪREĻU STALLIS"

Making first contact with horses for children from 2 years old with parents. Educational excursion about horses. An educational tour about horses and life in the countryside.

📍 Valgunde parish, Tīreļi, Tīreļa street 42  
☎ +371 26544243

### 7 HOPALAA BREWERY

Modern craft beer in a variety of flavours, tours in the brewery, tastings.

📍 Valgunde parish, Vītoļiņi, "Industriālais parks"  
☎ +371 29181786, 29432300

### 8 KALNCIEMS MUSEUM

Located in the old Kalnciems medical practice house, collects and preserves evidence of the cultural history of the old Kalnciems. At the doctor's house you can listen to stories about ancient times and tales.

📍 Valgunde parish, Tīreļi, Rīgas street 20  
☎ +371 28287793

### 9 ĶEMERI NATIOAL PARK

The park was established in 1997 and, accompanied by a knowledgeable guide, you can learn more about the diversity of the marshes and explore untouched raised bogs.

📍 Valgunde parish, (56.89271,23.53437)

### 10 PURVU BRIDĒJI

For lovers of nature and active recreation a hike with bog shoes in Ķemeru bog is offered. Together with Purvu bridēji you can reach places unseen to others eyes.

📍 Valgunde parish, Tīreļi  
☎ +371 20120101  
🌐 www.purvubrideji.lv

### 11 KRĀČU HILLS

One of the biggest dunes of the ancient Littorina Sea. The highest part of this mound is situated 29 m above sea level and 26 m above the surrounding plains.

📍 Valgunde parish, (56.89510,23.53508)

### 12 VALGUNDE CLIMBING WALL

The climbing wall is 8 m high and has 8 climbing routes. Climbing opportunities provide a useful way to spend leisure time and improve skills of climbing.

📍 Valgunde parish, Valgunde sport hall  
☎ +371 28463068



13

### 13 SVĒTE FLOODPLAINS

The Svēte Floodplains Nature Park was established within the framework of Natura 2000 to ensure conservation of rare and specially protected wild birds, plant species and habitat.

📍 Līvberze and Valgunde parish  
(56.71799,23.65913)

### 14 SAUNA AND TUB RENT "PIČU PAČU"

Sauna barrel and a tub rent, delivering them wherever your heart desires! Make your holiday special with the opportunity to relax without going anywhere.

📍 Valgunde parish, Vītoļiņi, Kļavu street 28  
☎ +371 26668320  
🌐 www.picupacu.lv

### 15 CRAFTS CENTRE LĪVE

Possibility to acquire various handicrafts: weaving, crocheting, beading and other skills. While learning ethnographic heritage of Latvian Folklore.

📍 Līvberze parish, Līvberze, Jelgavas street 4a  
☎ +371 26749894

### 16 BOAT RENTAL "KALNCIEMA MUIŽA"

Located on the site of the real Kalnciems Manor house. Tourists can offer rental a boat, raft hire and motorboat, visit of the old manor walls.

📍 Valgunde parish, "Upmaļi"  
☎ +371 29117388



10

### 17 Restaurant "Aitiņlauvas"

📍 Valgunde parish, "Aitiņlauvas"  
Rīga-Liepāja 22km  
☎ +371 29160393 🌐 www.aitinlauvas.lv



17

### 18 Guest house "Klīves pirts"

📍 Valgunde parish, "Klīves pirts"  
+371 20232331, 29777410

### 19 Guest house "Gošivs"

📍 Valgunde parish, "Lejasmauriņi"  
☎ +371 28763700, 29255931

### 20 Guest house "Aitiņlauvas"

📍 Valgunde parish, "Aitiņlauvas"  
Rīga-Liepāja 22 km  
☎ +371 29160393, 🌐 www.aitinlauvas.lv

### 21 Guest house "Branguļi"

📍 Valgundes parish, "Branguļi"  
☎ +371 25918171, 28772324

### 22 Guest house "Guntmārītes"

📍 Valgundes parish, "Guntmārītes"  
☎ +371 26164173

### 23 Holiday house "Jasmīnu nams"

📍 Līvberzes parish, Tušķi, "Jasmīnu nams"  
☎ +371 26431344, 🌐 www.jasminunams.lv

### 24 Accomodation "Alberģe Līvberzē"

📍 Līvberzes parish, Līvberze, Bērzu street 7-14  
☎ +371 29284599

### 25 Guest house "Upeslīči atpūtai"

📍 Līvberzes parish, "Upeslīči"  
☎ +371 20384844, 🌐 www.upesliciatputai.lv

### 26 Guest house "Zaļie atvari"

📍 Līvberze parish, "Atvari"  
☎ +371 29488465, 29161683

# Discover The Manors of Jelgava Region



1. *Svēte* Castle
2. *Bramberģe* Manor
3. *Zaļā* Manor
4. *Abgunste* Manor
5. *Vilce* Manor
6. *Blankenfelde* Manor

7. *Eleja* Manor Park
8. *Lielplatone* Manor and *Vešūzis*
9. *Liebricava* Manor
10. *Manor* Rooms
11. *Stalģene* Manor

## 1. *Svēte* Castle

Built in the 18th century as the residence of Peter von Biron, Duke of Courland, with a remarkable painting gallery and an orangery. During the visit, you can learn about the history of the Castle, meet the owner and visit the exhibition hall of Svēte Castle. Enjoy the surroundings while sitting in the gazebo and the hammocks on the river bank.

**THE OFFER:** Guided excursion, Ceramic masterclass  
☎ +371 22035461

## 2. *Bramberģe* Manor

The manor house was constructed in the first half of the 17th century. The gate of the Manor's fortification wall is unique, as it is the only monument of its kind in Latvia. The territory of the Manor can be used as a venue for celebrations.

**THE OFFER:** Excursion, Venue rent  
☎ +371 26148244

## 3. *Zaļā* Manor

The hunting castle of the duke of Zaļenieki (Zaļā) Manor is a unique architectural example of the 18th century. Currently, Zaļenieki Commercial and Crafts School is located in the Manor. The House of Restorers has been housed in the stables of the Manor.

**THE OFFER:** Guided excursion, Lease of premises, Catering, Creative and crafts workshops  
☎ +371 22043531

## 4. *Abgunste* Manor

Event hotel and residence of creativity for all kinds of art, culture and creative work processes and celebrating life. The Manor houses have crafts workshops and the largest ceramic kiln in Latvia, spacious rooms for events, as well as 90 beds.

**THE OFFER:** Excursion with the host, Full service rent of premises, Catering, Hotel  
☎ +371 29393131, +371 28373711

## 5. *Vilce* Manor

Vilce Manor House of the Medem Family, constructed in the middle of the 18th century. Ancient wall and ceiling paintings were discovered in it, as well as expositions and a pottery workshop has been created in the 400 m3 basement. The Manor House is surrounded by an English landscape park, which further leads into "Vilce" Nature Park.

**THE OFFER:** Guided excursion, Lease of premises, Disc golf course, Ceramic workshop  
☎ +371 26351169

## 6. *Blankenfelde* Manor

A place for celebrations with unpolished beauty and a special atmosphere. The Manor complex was constructed in the 18th century. The Manor complex is complemented by an English landscape park created in the middle of the 19th century and orchards.

**THE OFFER:** Excursion with the hostess, Lease of premises, Catering, Hotel  
☎ +371 26490272

## 7. *Eleja* Manor Park

The Tea House that was built in the 19th century has been reconstructed and is surrounded by a romantic landscape park. Interactive environmental objects have been placed in the park. An exhibition hall with an exposition of the history of Eleja Manor can be viewed.

**THE OFFER:** Guided excursion, Lease of premises  
☎ +371 26128853

## 8. *Lielplatone* Manor and *Vešūzis*

The 19th century Manor Park complex includes several buildings and a spacious park. The largest collection of bells in the Baltics can be viewed at the Manor. Vešūzis is an original and authentic part of the Lielplatone Manor complex. It offers the opportunity to participate in ancient laundry washing demonstrations led by a laundress.

**THE OFFER:** Guided excursion, Lease of premises, Catering  
☎ +371 26611468

## 9. *Liebricava* Manor

The Manor House was constructed in the 19th century, featuring nuances of classicism style. In the Manor, you can see Manor furniture and household items of the 19th century gifted by the descendant of the Klopmann Family – Georg Peter Baron von Klopmann.

**THE OFFER:** Guided excursion, Lease of premises  
☎ +371 22024127

## 10. *Manor* Rooms

A place for celebrations, people, art and music! A family story of the Manor Rooms with a musical ending and something delicious! Rooms with character for your celebration! New cultural space for jazz and creative work! We also offer various masterclasses.

**THE OFFER:** Guided excursion, Lease of premises, Masterclasses  
☎ +371 28341486

## 11. *Stalģene* Manor

The modern Manor House was constructed at the end of the 18th century in the style of classicism. The local history exposition of Jaunsvirlauka Rural Territory can be viewed in the Manor, which introduces the viewer to ancient objects and tools. A circle of Latvian annuals has been created in the park.

**THE OFFER:** Guided excursion, Leather processing masterclass  
☎ +371 26383129

## BOATING ROUTE AND DEVELOPED REST LOCATIONS ON THE LIELUPE RIVER

The tourism route for boating has been created along the River Lielupe from Bauska to the sea. 18 pontoon foot-bridges and information stands have been set up in the stops along the Lielupe banks.

### FOOT-BRIDGES IN JELGAVA COUNTY:

- 1 "LIEDAGI"  
Salgale parish, Emburga
- 2 STAĻĢENE  
Jaunsvirlauka parish, (56.57299, 23.96737)
- 3 HOUSE OF JĀNIS ČAKSTE  
Salgale parish, "Auči"
- 4 CAMPING "CĪZERI"  
Salgale parish, "Šalkoņi"
- 5 HOLIDAY HOUSE ĀNES MUIŽA  
Cena parish, Āne, Liepu iela 3
- 6 "MIERLAUKI"  
Valgunde parish, (56.74429, 23.65178)
- 7 "VECDAUDZENE"  
Valgunde parish, (56.76616, 23.64691)
- 8 LIELUPES STREET 14  
Kalnciems parish, Kalnciems



## Boat rental in Jelgava and Jelgava county

### JELGAVAS LAIVAS

Jelgava, Pasta island 3  
+371 26761807, [www.jelgavaslaivas.lv](http://www.jelgavaslaivas.lv)

### BOAT RENTAL "MUČAS"

Jelgava, Aroniju street 19  
+371 29211634, [www.laivunoma.com](http://www.laivunoma.com)

### RENTAL OF TRANSPERENT BOATS

Cena parish, Brankas, "Krasti"  
+371 26400224

### BOAT RENTAL AND TOURS "OZOLAIVAS.LV"

Ozolnieki, Kļavu street 6  
+371 23202900, [www.ozolaivas.lv](http://www.ozolaivas.lv)

### BOAT RENTAL "KALNCIEMA MUIŽA"

Valgunde parish, "Upmaļi"  
+371 29117388

## GAME

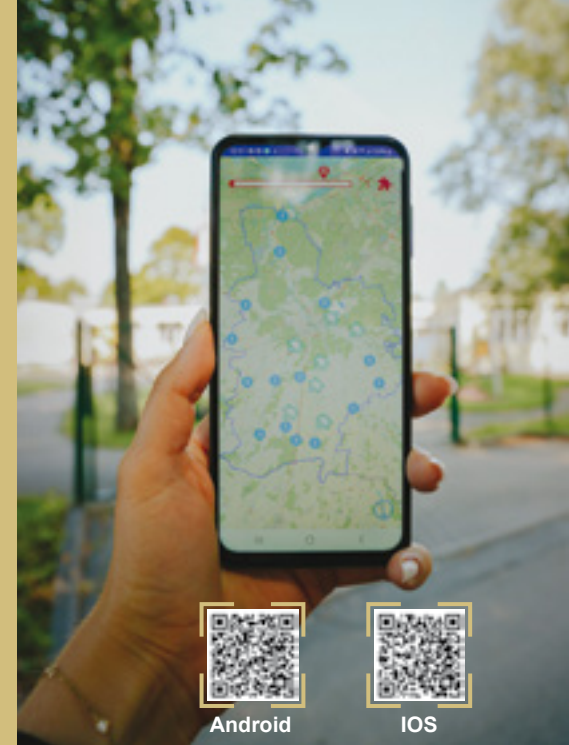
## "PLAY JELGAVA COUNTY"

Go on an informative and exciting trip through Jelgava county by participating in the game "Play Jelgava County!".

The application is designed as a game, allowing participants to visit all parishes in Jelgava county. In each parish, specific objects have been selected, in which to fulfill a task prepared by the youth of the county or to give a recommendation for the development and improvement of the environment.

By collecting a certain number of pieces of the puzzle, which are revealed by answering questions and sending suggestions, the participant can apply for a prize prepared by the municipality of Jelgava county. The prize - delicacies from local food producers.

Apply for the award: [izspelenovadu@gmail.com](mailto:izspelenovadu@gmail.com)



## USEFUL INFORMATION

### HOW TO GET TO JELGAVA

#### By car

Riga-Jelgava: 45km, A8 highway  
Lithuania-Jelgava: A8 highway  
Bauska-Jelgava: 48km, highway P103 and A8  
Liepāja-Jelgava: 182km, highway A9

#### By train

The train Riga-Jelgava leaves Riga railway station every hour, journey time 50 minutes.  
More information [www.vivi.lv](http://www.vivi.lv)

#### By bus

Minibuses Riga-Jelgava leaves Riga International Bus Station approximately 4 times an hour, journey time 55 minutes.  
More information [www.1188.lv](http://www.1188.lv)

#### Public transport in Jelgava

The bus timetable and routes can be found on the Jelgava Bus Park website  
[www.jap.lv](http://www.jap.lv)

### Public transport in Jelgava county

The bus timetable and routes can be found on the 1188.lv website

[www.1188.lv/satiksmes](http://www.1188.lv/satiksmes)

### USEFUL PHONE NUMBERS

Transport enquiries	1188
Emergency medical assistance	113
Jelgavas county Municipality Police	+371 63012254, 20029099
National Police	110
State Fire and Rescue Service	112
Jelgava State Municipality Operational Information Centre in Jelgava	8787





## **TOURISM INFORMATION**

### **JELGAVA REGIONAL TOURISM CENTRE**

📍 Akadēmijas street 1, Jelgava

☎ +371 63005447, +371 25619266, 🌐 [www.visit.jelgava.lv](http://www.visit.jelgava.lv)

### **LIELPLATONE TOURISM INFORMATION POINT**

📍 Lielplatone parish, Lielplatone manor

☎ +371 26611468

### **VILCE TOURISM INFORMATION POINT**

📍 Vilce parish, Vilce manor

☎ +371 26351169, +371 28346682

### **LIELVIRCAVA TOURISM INFORMATION POINT**

📍 Platone parish, Lielvircava, Lielvircavas street 4a

☎ +371 22024127

### **ELEJA TOURISM INFORMATION POINT**

📍 Eleja parish, Eleja Tea house

☎ +371 26128853

### **STAĻĢENE TOURISM INFORMATION POINT**

📍 Jaunsvirlauka parish, Staļģene, Skolas street 2

☎ +371 26383129



Publisher: Jelgavas reģionālais tūrisma centrs, 2025

Print: SIA "ADverts"