



SUMMER HOLIDAY ACTIVITIES IN JELGAVA AND JELGAVA COUNTY

for families with children

**THE SAND
SCULPTURE
PARK**

**ON PASTA ISLAND
SINCE MAY 24**



Visit Jelgava



visit.jelgava



Explore and Discover!

JELGAVA HOLY TRINITY CHURCH TOWER

Digital exhibitions, the highest observation platform in the city.

Jelgava, Akadēmijas street 1, ☎ +371 63005447, 25619266



JELGAVA OLD TOWN HOUSE

18th-century house, where you can see the lost wooden buildings of old Jelgava and learn about the history of the Old Town House in an interactive way.

Jelgava, Vecpilsētas street 14, ☎ +371 63005407, 27309673

HOUSE OF LATVIAN TRADITIONS AND CRAFTS

A tour of the weavers' workshop, an opportunity to try out weaving skills, bake bread and learn how to dye yarn with natural dyes, soap making master class. Jelgava, Vecpilsētas street 2, ☎ +371 29116210



JELGAVA HISTORY AND ART MUSEUM OF ĢEDERTS ELIASS

Holds important facts about the history of Jelgava, works by the painter Ģederts Eliass, part of his library, furniture and a rich collection of oriental art. Virtual exhibitions with 3D glasses. From 1 May to 30 September, you can climb the tower to enjoy the panoramic view.

Jelgava, Akadēmijas street 10, ☎ +371 63023383, 63080150

CHRISTMAS BATTLES MUSEUM

A place where the legendary Christmas Battles took place over a hundred years ago. Enjoy hiking trails and an educational nature trail stretching 7.2 km.

Jelgava county, Valgunde parish "Mangaļi", ☎ +371 28349259, 67228147





MEMORIAL MUSEUM OF ĀDOLFS ALUNĀNS

The house where the father of Latvian theatre Ādolfs Alunāns spent the last years of his life, with furniture, a library and household objects from the early 20th century.

Jelgava, Filozofu street 3, ☎ +371 63021180

JELGAVA PALACE AND THE CRYPT OF THE DUKES OF COURLAND

The largest Baroque palace in the Baltic States. The museum presents the history of the construction of the 13th-century Livonian Order castle. The crypt contains 30 sarcophagi and restored burial garments.

Jelgava, Lielā street 2 ☎ +371 63005617 (palace)

☎ +371 26499151 (crypt)



JĀNIS ČAKSTE HOUSE

A place to learn about the life story of Latvia's first president and his journey to office.

Children can explore the park and surrounding grounds to discover what life was like before World War II and complete activity worksheets.

Jelgava county, Salgale parish, "Auči" ☎ +371 26392154

CANDY WORKSHOP

Every Saturday, learn about the caramel-making process and make your own caramel! Call for details.

Jelgava, Rūpniecības street 1A,

☎ +371 29851426, 25664748



ANRU MOTORS COLLECTION OF HISTORIC VEHICLES

restored Soviet-era vehicles– ZAZ, VAZ and GAZ. Tours by prior appointment.

Jelgava, Garozas street 15a, ☎ +371 29553492

Spend Time with Animals

*by prior appointment



WILD HORSES AND PILSSALA VIEWING TOWER

The viewing tower stands 19.2 metres (six storeys) high and offers views of wild horses and birds. Guided excursions to see the horses are also available.

Jelgava, Pils sala ☎ +371 20264343



MINI ZOO "MŪSU ZOO" (OUR ZOO)

See different animals and birds. It is possible to feed the animals.

Jelgava county, Sesava parish, "Ābelītes",
☎ +371 27729394, 26128383

MAZMUŠĶU ZIRGI

Horse riding, it is possible to feed and pet the horses.

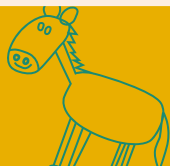
Jelgava county, Cena parish, "Mazmuški",
☎ +371 29140535



GOAT FARM – LĪCĪŠI

See more than 200 male and female goats, chickens and horses of various breeds, surrounded by the Misa River and forest.

Jelgava county, Cena parish, "Līcīši",
☎ +371 29322860, 26453155



HORSE BREEDING FARM – PRINCIS

Horse and pony rides.

Jelgava county, Cena parish, "Gaiju stallis",

+371 26563936, 20206039



PONIES FOR EVENTS – PONIJI.LV

Pony rides, possibility to feed the animals, kids' parties with ponies.

Jelgava county, Cena parish, "Vīksnes",

+371 25523374

MINI ZOO - LAUKU SĒTA

Peaceful walks with the possibility to see donkeys, llamas, alpacas, miniature goats, miniature sheep and various birds.

Jelgava county, Cena parish, "Jaunaudzes",

+371 27171712



OSTRICH FARM MAZZARIŅI

One of the largest ostrich farms in Latvia, home to African ostriches, Australian emus and South American nandus.

Jelgava county, Glūda parish, Nākotne,

+371 27178050

EMU HOME AUSTRALIAN EMU FARM

Visitors can see these exotic birds, enter their enclosures, get close to them, and learn fascinating facts about their lifestyle.

Jelgavas county, Līvberze parish, "Strautiņi"

+371 28017784



Experience Nature!

WOODEN BOARDWALKS AT THE FLOODLAND MEADOWS OF THE RIVER SVĒTE

The wooden boardwalks reveal another natural corner of the city—the floodplain meadows of the Svēte River. The total length of the boardwalks is approximately 1.6 km.

Jelgava, Sniega street, Miežītes road, Būriņu road



OZOLNIEKI FOREST PARK

A network of large and small trails winds through the forest, with special signs helping visitors find their way. It is suitable not only for walking but also for cycling. A paved skateboard track is also available.

Jelgavas county, Ozolnieki, Ozolnieku Mežaparks

LANGERVALDE FOREST

A well-maintained forest park featuring a network of trails suitable for walking, running, and cycling.

Jelgava, Rubeņu road

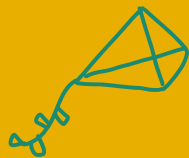


BOAT AND CATAMARAN RIDES

For available offers, visit:
www.visitjelgava.lv



Play and be Active!



CHILDREN'S RECREATION AND PLAY TOWN IN UZVARAS PARK

Activity areas are divided into zones for three different age groups.

Jelgava, Uzvaras street 51

From June to August, every Saturday
SPECIAL EVENTS FOR CHILDREN
MORE INFORMATION: kultura.jelgava.lv

PILSSALA PLAYGROUND

A well-equipped children's playground featuring cycling paths and trampolines. Several hammocks are located both inside and around the playground.

Jelgava, Pilssalas street 5



OZOLSKVĒRS PLAYGROUND

The playground is divided into two sections separated by a rubber-surfaced area with raised features.

Jelgava, Pulkveža O.Kalpaka street 2

PASTA ISLAND PLAYGROUND

A children's playground equipped with a sandbox, swings, and slides.

Jelgava, Pasta street 3



CABLE AND WATER PARK MASTI

The park features a well-maintained swimming area, children's playgrounds, a wakeboarding and water-ski cable system, an inflatable water attraction park, and an 18-metre-high climbing and bouldering wall.

Jelgavas county, Ozolnieki parish, Ozolnieku Lake



SUITABLE ACCOMMODATION

for families with children

HOTEL JELGAVA

Jelgava, Lielā street 6,
☎ +371 63026193, 63023349

GUEST HOUSE KĀRKLŪ MUIŽA

Jelgava, Kārklū street 67, ☎ +371 26222266

BLANKENFELDE MANOR

Jelgava county, Vilce parish, Blankenfelde,
☎ +371 26490272, 29445426

HOLIDAY HOME JASMĪNU NAMS

Jelgava county, Līvberze parish, Tuški,
"Jasmīnu nams", ☎ +371 26431344

GUEST HOUSE UPESLĪČI ATPŪTAI

Jelgava county, Līvberze parish, "Upeslīči atpūtai",
☎ +371 20384844

GUEST HOUSE GALZEMJI

Jelgava county, Jaunsvirlauka parish, "Galzemji",
☎ +371 29188408

HOTEL SENLIČI

Jelgava county, Jaunsvirlauka parish, "Senlīči",
☎ +371 20007065, 29486086

HOSTEL SILI

Jelgava county, Jaunsvirlauka parish,
Mežciems, Liepu street 8, ☎ +371 24807777

MODULAR HOUSE CERIŅI


Jelgava county, Glūda parish, "Nākotnes parks",
☎ +371 25713949


HOLIDAY HOME PŪPOLI


Jelgava county, Glūda parish, "Nākotnes parks",
☎ +371 25713949


HOTEL AGATE


Jelgava county, Ozolnieki, Skolas street 16,
☎ +371 25661811

 Accessibility with a baby carriage

 Available baby cot

 Facilities suitable for parents with babies

 Suitable menu for children

 Entertainment options for children

FRIENDLY PLACES FOR DINING

RESTAURANT PILSĒTAS ELPA

Jelgava, Pasta Island 1, ☎ +371 26633703

RESTAURANT "CHOCOLATE & PEPPER"

Jelgava, Kr.Barona street 6, ☎ +371 63010220, 23770399

GRILL BAR & RESTAURANT "PARKS"

Jelgava, Kr.Barona street 3, ☎ +371 20118881

PIZZERIA "ČILI PIZZA"

Jelgava, Rīgas street 11a un Katoļu street 7,
☎ +371 63045555

RESTAURANT AVLABAR

Jelgava county, Ozolnieki, Skolas street 16,
☎ +371 25989109

RESTAURANT "MASTI"

Jelgava county, Ozolnieki, Ozolnieki Lake,
☎ +371 23884400

FAMILY RESTAURANT "MEKA"

Jelgava county, Ozolnieki, Stadiona street 5a,
☎ +371 29444403

RESTAURANT VIEDI

Jelgava, Cūkura street 21, ☎ +371 27744252

ZEMNIEKA CIENASTS

Jelgavas county, Jaunsvirlauka parish, "Līči",
☎ +371 20455402

RESTAURANT "CENTRAL CAFE JELGAVA"

Jelgava, Lielā street 6, ☎ +371 20144454

KONDITOREJA & KAFEJNĪCA "PĀTE BAKERY"

Jelgava, Lielā street 14, ☎ +371 27200002

CAFÉ "BROKASTNĪCA"

Jelgava, Jāņa Asara street 1, ☎ +371 26671966