



Jelgava

Jelgava county

Ozolnieki county

Tourist
guide
2018



Discover Jelgava, Jelgava municipality and Ozolnieki municipality!

You have obtained a guidebook to an inspiring tour around Jelgava, Jelgava municipality and Ozolnieki municipality. What makes this journey so special? Jelgava city will surprise you with its old and rich history and the contemporary solution to telling its history, active recreation in the calm Zemgale waters, in Jelgava municipality you may take a romantic trip around the manors and enjoy homemade treats, while Ozolnieki municipality invites you to have an active holiday.

History

The history of Jelgava is rich with events - many things that are important for Latvia have transpired here - it was the capital of the Duchy of Courland and Zemgale, here the first newspaper in Latvian language was published, it was the home of the first graduate school and also here the first air balloon was launched.

Charm of Manor Houses

The richness of Jelgava municipality history lies in its old manor houses. The county has ten manors and their parks, which hide many secrets, stories and historical facts.

Beauty of Nature

Discover the unseen and experience the daily life of wild horses on the Pils island at the center of the city, discover the diversity of birds in Svēte flood plains during spring or take a relaxing stroll away from the hectic city life in one of the nature parks.

Gourmet Adventures

Jelgava municipality and Ozolnieki municipality will take you on a search for new flavors - in the area many local producers have opened their doors for visitors - but the cafes and restaurants of Jelgava offer the dishes and drinks characteristic to the city.

Call of the Waters

The rivers of Zemgale region, even though serene and steady, are perfect for a leisure trip by boat. When visiting Jelgava during the warm season, you should definitely visit the banks of Lielupe and Driks rivers to go for a boat ride or try out water bikes, SUP boards or simply enjoy a rest on one of the beaches.

Holiday Fun

Whatever the time of year, you will be able to enjoy an extensive programme of activities. During wintertime Jelgava invites to visit the largest Ice Sculpture Festival in the Northern Europe, but in the summer - Sand Figure Festival and the Milk, Bread and Honey festival, while in the fall you can discover the secrets of the manors in the Jelgava region during the Night of Legends and enjoy farm goods during the harvest fair.

Visit Jelgava, Jelgava municipality and Ozolnieki municipality and surprise yourself with new adventures!

Discover more with Overly!



1. The app Overly can be found at Appstore or Google play store.
2. Download it for free on your smartphone or tablet.
3. Search for a photo with Overly logo in the brochure.
4. Scan your marked photos with Overly app and they will come to life – an exciting opportunity to learn and enjoy more!

Jelgava (Mitau) city

- ▶ Population: 61 000
- ▶ The fourth largest city in Latvia by population
- ▶ Area: 60.3 km²
- ▶ Jelgava was founded in 1265
- ▶ Historical name – Mītava or Mitau
- ▶ The capital city of the Duchy of Courland and Semigallia from 1578 to 1795



www.jelgava.lv



MUSEUMS AND EXHIBITIONS



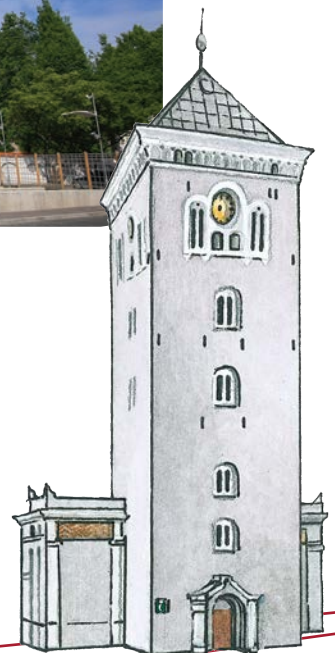
Scan with Overly and discover more!



1 Jelgava Holy Trinity Church tower

Akadēmijas iela 1, +371 63005445, 63005447, www.tornis.jelgava.lv

- ▶ The first brick Lutheran church built in Europe in 1574; destroyed during World War II;
- ▶ Nowadays it is the most visited tourist attraction in Jelgava with multimedia exhibits about the first presidents of Latvia, the symbols of Jelgava and the main historical facts, Holy Trinity Church and the national costume of Zemgale;
- ▶ A viewing platform at 37 metres, showroom, French restaurant “La Tour De Marie”, conference hall, tourist information centre.



2 Jelgava Palace

Lielā iela 2, +371 63005617, www.jelgavaspils.lv

- ▶ The largest Baroque – style palace in the Baltic states, designed by the Russian court italian architect F. B. Rastrelli and built in 1738;
- ▶ The former residence of the Duke of Courland and Semigallia and the administrative centre of the province; nowadays it mane building of Latvia University of Agriculture;
- ▶ Palace history museum, entertaining and educational programmes: “Hot chocolate in the residence of the Duke” and “Letter workshop of Duchess Dorothy”.



3 Rundāle Palace Museum exhibition “Vault of the Dukes of Courland”

Lielā iela 2 (the building of Jelgava Palace, entrance from the palace park), +371 26499151, 63962197
(open to visitors from May 1 to October 31)

- ▶ The family vault of the Dukes of Courland in Jelgava Palace is the largest burial of this kind in Latvia and it is one of the few burials of governors’ dynasties in the world which is open to the public;
- ▶ From 1569 to 1791, 24 members of the Kettler dynasty and 6 member of the of Biron dynasty were interred in the vault in Jelgava Palace;
- ▶ Vault history exhibition contains information about the people interred there and restored articles of clothing.



4 Jelgava History and Art Museum of Ģederts Eliass

Akadēmijas iela 10, +371 63023383, 63080150, www.jvmm.lv



Scan with Overly and discover more!

- ▶ The building was built in 1775 as Academia Petrina (Peter’s Academy), the first higher educational establishment in the territory of Latvia, founded by Peter von Biron, the last Duke of Courland and Semigallia;
- ▶ Since 1952, it houses the museum named after the great Latvian painter Ģederts Eliass (1887 – 1975);
- ▶ Interactive history exhibits, paintings by Ģ. Eliass, art and history exhibitions, educational programmes for different age groups.

5 Memorial Museum of Ādolfs Alunāns

Jelgava, Filozofu iela 3, +371 63021180, www.alunans.lv

- ▶ Memorial house of Ādolfs Alunāns, where the father of Latvian theatre spent the last two years of his life, from 1910 to 1912;
- ▶ Mode of life in the beginning of the 20th century, exhibitions with interactive elements, art exhibitions, educational programmes for pupils;
- ▶ It is possible to try on different costumes and see how it feels to be an actor, while reading anecdotes and learning archaic words in Latvian on the small stage.



6 Firefighting exhibition*

Dobeles iela 16, +371 63037550, 29190710

* the visit must be arranged in advance

More than 400 exhibits from firefighters' work and everyday life: from old diplomas to the unique Ford - Vairocs fire - engine.



7 Museum of the "Ģintermuiža" Hospital *

Filozofu iela 69, +371 29678838, www.gintermuiza.lv

* the visit must be arranged in advance

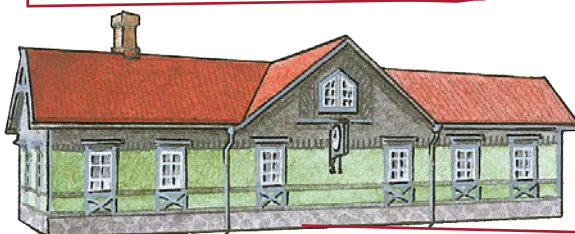
Exhibition about the history of the psychiatric hospital from the 19th century, drawings made by the patients and unusual items.



8 Jelgava Exhibition of Latvian Railway History Museum

Jelgava, Stacijas iela 3, +371 63096494, www.railwaymuseum.lv

- ▶ Exhibition about one of the oldest and most important railway junctions in Latvia;
- ▶ Guided tour to the former locomotive depot in Jelgava, birthday celebrations at the museum, safety lessons for pupils.





CHURCHES



9 St. Anna's Lutheran Cathedral

Lielā iela 22a, +371 29123969, www.jelgavasannasbaznica.lv

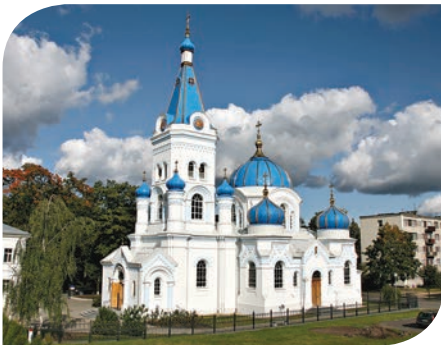
- ▶ The brick church was built in the first half of the 17th century; it is the oldest preserved church in Jelgava;
- ▶ Painting "Christ and the Samaritan Woman" by the Latvian painter Janis Rozentāls;
- ▶ Religious and classical music concert venue with the largest organ in Zemgale.



10 Cathedral of the Immaculate Virgin Mary

Katoļu iela 11, +371 63021550, www.jelgavaskatedrale.lv

- ▶ The church was designed by the architect C. J. Strandmann and built in 1906 in pseudo-Gothic style with splendid decorations and a bas-relief "The Last Supper" above the entrance;
- ▶ During World War II, the church burned down; its renovation was completed only in 1992;
- ▶ In 1996, Pope John Paul II elevated the church to the status of cathedral.



11 St. Simeon's and St. Anna's Orthodox Cathedral

Raiņa iela 5, +371 63020207

- ▶ The church was designed by the architect N. Chagin and built from 1890 to 1892, keeping the foundations and a part of the altar from the previous church that was designed by the architect F. B. Rastrelli and built in 1774;
- ▶ Like most orthodox churches, it has a highly ornate interior;
- ▶ There are nine bells in the bell-tower; the largest bell weighs 830 kg.

12 St. John's Lutheran Church

Jāņa iela 1, +371 63023790

- ▶ The construction of the church was initiated in 1845, but the tower was built in 1882;
- ▶ Next to the church there was a Writers' Cemetery, a Catholic Cemetery, John's Cemetery and an Old-believers' Cemetery; but in the 1950s this territory was transformed into Alunāns Park and Station Park.

13 Jelgava Dormition of the Most-holy Mother of God Orthodox Church

Dzirnavu iela 1, +371 63021006

- ▶ Initially, the church was built as a chapel and was designed by the architect V. A. Lunsķis;
- ▶ The church survived the fires of World War II, but in 1947 the cemetery was razed to the ground, and a flour-mill was built there.



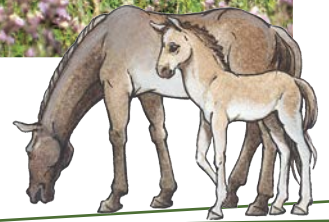
NATURE AND PARKS



14 Lielupe floodland meadows and wild horses

Palace Island, +371 20264343

- ▶ The floodland meadows on the Palace Island, between the Lielupe River and the Driksa River, host a diversity of plants and birds, as well around than 70 wild horses;
- ▶ It is possible to take a guided tour to explore the floodland meadows and see the wild horses.



15 Parks and green spaces in Jelgava

- ▶ Jelgava Palace Park
- ▶ Station Park
- ▶ Rainis Park
- ▶ Alunāns Park
- ▶ Victory Park
- ▶ Duke Jacob's Square
- ▶ Oak Square



16 Mītava Bridge and the promenade of J. Čakstes Boulevard

J. Čakstes bulvāris

- ▶ One of the longest pedestrian and cycling bridges in Latvia. Due to its design, it is considered to be unique in the Baltic States. It connects the city centre with the Post Island;
- ▶ The pedestrian promenade of J. Čakstes Boulevard has two levels, one parallel to the street and the other along the Driksa River bank, with 3 metres high waterfalls.





17 Post Island

- ▶ A great place for all kinds of recreational activities: there are children's playgrounds, pedestrian and cycling paths, outdoor exercise equipment, a beach, volleyball fields and an ice rink during the winter season;
- ▶ In the centre of the island there is an open-air stage that hosts the largest city festivals, open-air dances and theatre festivals.



18 Lielupe Bank promenade

- ▶ Pedestrian and cycling path along the right bank of the Lielupe River with a view of the city panorama, a beach and stand up paddle board rental;
- ▶ Metal sculpture "Sirdspuķis" (Heart-bird) by K. Īle at the end of the promenade.



MONUMENTS, MEMORIAL SITES, URBAN OBJECTS

19 Monument to the Liberators of Jelgava "Lāčplēsis"

Station Park

- ▶ Unveiled on November 21, 1992, the monument is dedicated to the liberation of Jelgava from Bermond-Avalov's forces during the battles of 1919;
- ▶ The sculptor Andrejs Jansons restored the monument "Lāčplēsis and the Dark Knight" which was created by his father Kārlis Jansons in 1932.



20 Sculpture-fountain "Jelgava's Student"

J. Čakstes bulvāris, near Mītava Bridge

- ▶ Sculpture of a fictional third-year student Jēkabs Ceriņš, born on July 26;
- ▶ The author K. Īle was inspired by a song about a student wandering the streets of Jelgava on a late, rainy evening;
- ▶ The student's umbrella is believed to have magical powers – you have to make a wish and touch the umbrella handle, then your wish will come true.



Photo – Ilze Strēle

21 Monument to Jānis Čakste, the first president of Latvia

*Lielā iela 1a
(next to the Holy Trinity Church tower)*

Unveiled on November 14, 2003, the author is the sculptor A. Dumpe.



22 Block of Vecpilsētas Street and Dobele gates

Block of Vecpilsētas Street

This historical city block was built in 18th and 19th Century; it is the oldest preserved part of the city that was not destroyed in World War II.

23 Love Alley

Dobele highway between Pūra and Kūliņu road

A place steeped in legends where newlyweds have been planting birches since the 18th Century and where K. Tetsch and G. Z. Schwander, two friends and advisers to the Duke of Courland and Semigallia, were going for walks.

24 Memorial Sign in Honour of the Singer Nora Bumbiere

The square behind Jelgava Culture Centre

The sculpture, made by the sculptor K. Īle, is made in tribute to Nora Bumbiere, the legendary Latvian singer from Jelgava who was famous in the 1970s.



25 Monument to Ādofs Alunāns

Alunāns Park

This monument, to the father of Latvian theatre Ādofs Alunāns, was erected over his grave in 1913 in the former John's Cemetery, which is now Alunāns Park.

26 Svētbirze (Sacred birch grove)

The crossroad of Kalnciema road and Vecais road

- ▶ On June 14, 1989, a stone monument was erected to commemorate the citizens of Jelgava who suffered and died during the Soviet genocide against the Latvian people;
- ▶ In 2008, the memorial "Path of Sufferings" was unveiled.



CULTURE

Cultural venues – concert venues, theatres and exhibition venues

www.kultura.jelgava.lv

27 Jelgava Culture Centre, Kr. Barona iela 6, +371 63023461

28 Culture House "Rota", Garozas iela 15, +371 63000844

29 Jelgava Student Theatre *

*J. Čakstes bulvāris 5a, +371 29677858, 26544502, www.jst.lv
* the visit must be arranged in advance*



Student actor performances of plays, prose and poetry, theatre sports and tours around the theatre.



FACTORY TOURS *

* the visit must be arranged in advance

30 Candy workshop*

Rūpniecības iela 1a, +371 25664748, 29851426,
www.karameludarbница.lv

Candy making demonstrations, the opportunity to make your own candy and a factory shop.



31 Jelgava Printing House*

Langervaldes iela 1a, +371 63007480, www.jt.lv

One of the largest printing houses in the Baltic states with deeply-rooted traditions; an introduction into the printing process.

32 Polymer pipe manufacturer Evopipes*

Langervaldes iela 2a, +371 63094300, www.evopipes.lv

One of the most modern polymer pipe manufacturers in Europe and the world; an introduction into the process of making polymer pipes.



33 Fortum biomass cogeneration plant*

Rūpniecības iela 73a, +371 29338491, www.fortum.lv

Latvia's largest and most modern biomass cogeneration plant that uses renewable energy; an introduction into the heat production process.



ACTIVE RECREATION

34 Zemgale Olympic Centre

Kronvalda iela 24, +371 20365713, 63020792, www.zoc.lv

Multifunctional sports hall, football and track and field stadium, volleyball fields, BMX track.

35 Recreation and Sports centre "Zemgale"

Rīgas iela 11, +371 63007700, www.skzemgale.lv

Bowling, tennis courts.

36 Jelgava Ice hall

Rīgas iela 11, +371 63007220, www.skzemgale.lv



37 “Pārielpupes pirtnieki”

Cukura iela 13, +371 26370100, www.parlielpupespirtnieki.lv

Sauna rituals.

38 Sports and Recreation Complex “Rullītis”

Aku ceļš 1, +371 28285633, www.rullitis.lv

Kart racing track.

39 Bicycle rental “Pepijas velomānija”

Rīgas iela 67, +371 29733112

Bicycle rental, routes and tours.

40 Health Center and Fitness Club “Fitland”,

Dobeles šoseja 7, +371 63023070, www.fitland.lv

41 Tennis Club “Jelgava”

Lietuvas šoseja 68a, +371 26261919, 26912017

42 Paintball “Rullītis”

Aku ceļš 1, +371 28496369, www.peintbols-telpa.lv

43 A-Z Bouplings

Uzvaras iela 12, +371 29900888, 63010350, www.azbouplings.lv

185 Children and Youth Camp “Lediņi”

Lediņu ceļš 1, “Lediņi”, +371 26448086, www.junda.lv

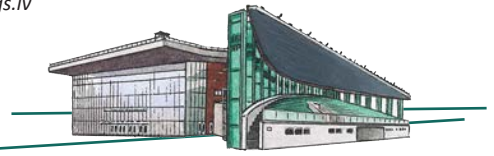
childrens’s playgrounds, camping, picnic locations, swimming

● Flight in a hot air balloon

+371 22098098

186 Bio Ritmi Sports Club

Akadēmijas iela 21, +371 27799919, www.bioritmisports.lv



WATER RECREATION

44 Boat tours on the Lielupe and Driksa Rivers

For more information contact Jelgava Regional Tourism Centre +371 63005447, www.visit.jelgava.lv

Boats leave from the quay on the promenade of J. Čakstes Boulevard near Mītava Bridge; the boats seat 8-100 people.

46 Stand up paddle board rental

Lielupe bank promenade beach, Peldu iela, +371 25757555, www.supx.lv

Paddleboarding on the Lielupe and Driksa Rivers.

47 Jelgava Yacht Club

Pilssalas iela 4, +371 20205215, 29242520, www.jjk.lv

Paddle boat and boat rental.

48 Paddle boat and boat rental on the Post Island

Pasta sala 3, +371 25432323, 28379193

● Boat rental “Mučas”

+371 20205127, 28330963, www.laivunoma.com

Tourist boats and routes.

37 “Pārielpupes pirtnieki”

Cukura iela 13, +371 22478286, 26370100, www.parlielpupespirtnieki.lv

Tourist boats, boat routes, tours, boat photo orienteering.

38 Wakepark “Rullītis”

Aku ceļš 1, +371 26003372

Water skiing on a cable system.

Beaches in Jelgava

There are two beaches on the Lielupe River:

49 On the right bank of the river near the promenade

50 On the left bank of the river, on the Post Island





WHERE TO EAT?

- 1 **Restaurant "La tour de Marie"**,
Akadēmijas iela 1, +371 28837731, 63081392,
www.marijastornis.lv
- 51 **Restaurant, café "Parks"**,
Kr. Barona iela 3, +371 63024188, 27833219,
www.restoransparks.lv
- 52 **Restaurant "Madara"**,
Lielā iela 22, +371 63027012
- 53 **Restaurant "Pilsētas elpa"**,
Pasta sala 1, +371 26633703
- 54 **Bistro and bakery "Silva"**, Driksas iela 7/9,
+371 63084899, 29266586,
www.bistrosilva.lv
- 55 **Lunch restaurant "Otto"**, Lielā iela 17,
+371 26661151
- 56 **Tavern "Istaba"**, J. Čakstes bulvāris 7,
+371 63025909, 29507108
- 57 **"Kreklu krogs"**, Lielā iela 19a,
+371 26633433, www.kreklukrogs.lv
- 58 **Café-cocktail bar "Chocolate & Pepper"**,
Kr.Barona iela 6, +371 63010220, 23770399,
www.choco-pepper.lv
- 59 **Bar-restaurant "Plate"**, Lielā iela 6,
+371 63023349, www.hoteljelgava.lv
- 60 **Bar "Saules krogs"**, Kr. Barona iela 6,
+371 29224155
- 61 **Tavern "Ceplis"**,
Lielā iela 49, +371 63024726
- 62 **Café "Pie mednieka"**,
Vecpilsētas iela 15, +371 63028528
- 63 **Tea house "Silva"**, Pilssalas iela 2a,
+371 22119119, 29266586
- 64 **Restaurant-pizzeria "Čili Pica"**,
Katoļu iela 7 un Rīgas iela 11,
+371 63045555, www.cili.lv
- 65 **Pizzeria "Picu darbnīca"**, Rīgas iela 1,
+371 20003993,
www.picudarbnica.lv
- 67 **Italian pizzeria "Rosso Pizza"**,
Lielā iela 34, +371 63011777,
www.rosso-pizza.com
- 45 **Café – bistro "Salmu krogs"**,
Katoļu iela 18, +371 63011691
- 68 **Express restaurant "Namma"**,
Rūpniecības 77a, t/c Elvi,
+371 25459777, 29151939,
www.namma.lv
- 69 **Cake studio "Tarte"**,
Mātera iela 26, +371 20136090
- 70 **Fast food restaurant "McDonald's"**,
Brīvības bulvāris 1, +371 63020166,
26468158, www.mcdonalds.lv
- 71 **Fast food restaurant "Hesburger"**,
Katoļu iela 10b, +371 25911221;
Loka maģistrāle 2a, +371 26480302,
www.hesburger.lv



WHERE TO SLEEP?



- 72 ******Hotel "Jelgava"** (80 places), Lielā iela 6,
+371 63026193, 63023349, www.hoteljelgava.lv
- 73 *****Hotel "Zemgale"** (78 places), Skautu iela 2,
+371 63007707, www.skzemgale.lv
- 66 **Hotel "Brīze AM"** (28 places), Atmodas iela 9,
+371 63082979, 22720573
- 74 **Motel "Akva"** (30 places), Birzes iela 49,
+371 63023444, 29990477, 29555767
- 75 **Youth hostel – LLU 8. Dienesta viesnīca**
(132 places), Lielā iela 19, +371 25419650

Jelgava county



Scan with
Overly
and
discover
more!

- ▶ Population: 24 062
- ▶ Area – 1317 km²
- ▶ The largest municipality in Zemgale region
- ▶ Jelgava municipality includes 13 parishes – Elejas, Glūdas, Jaunsvirlaukas, Kalnciema, Lielplatones, Līv bērzes, Platones, Sesavas, Svētes, Valgundes, Vilces, Vircavas un Zaļenieku parish

www.jelgavasnovads.lv



MANORS AND CASTLES *

** Please, book a visit*

76 Eleja manor park and Tea house *

Elejas parish, +371 26128853

- ▶ Manor castle – once a brilliant sample of classical architecture in Europe, built by order of Duke Joan Medem from 1806 to 1810, destroyed during the First World War;
- ▶ In 2015 the romantic Tea house and the stone wall fence with arcades was renovated;
- ▶ The park includes rare tree species, 15 secular trees and the open air stage hosts the biggest events in Jelgava municipality.



77 Zaļenieki (The Green) Manor *

Zaļenieku parish, +371 22043531

- ▶ The hunting palace of the Duke of Courland, a sample of 18th century architecture, the building still holds a significant number of architecturally significant interior elements;
- ▶ Currently, Zaļenieki Commercial and Crafts Secondary School is located in the manor;
- ▶ The park includes exotic tree species, a nature trail has been established.



78 Vilce manor *

Vilces parish, +371 26351169, 28346682

- ▶ The manor complex was built in middle of the 18th century and was owned by Medem and Keizerling families;
- ▶ Currently, Vilce elementary school, tourist information point and a historical exposition is located in the manor;
- ▶ The manor house and the surrounding area is a part of the nature park "Vilce".



79 Lielplatone manor *

Lielplatones parish, +371 26611468

- ▶ The legendary manor was formed around the 19th century and belonged to the barons Hahn;
- ▶ the manor complex includes several household buildings and an extensive park, where horseback riding is available;
- ▶ Currently, the estate houses the Lielplatone Municipality, library, kindergarten and tourist information point.



80 Vircava manor and park *

Vircavas parish, +371 63085984, 26261569

- ▶ The manor was built in the 18th century by a project of S. Jensen and was a beloved rural residence of the Duke of Courland Peter Biron;
- ▶ In 1919, while retreating from Jelgava city, the manor was burned down by the Bermontians;
- ▶ Today the best preserved manor buildings is the Chevalier House which houses the Vircava Secondary school, while the former grain barn houses the Community Center; the area includes a partially preserved baroque park.

187 Berķene Manor *

Vilces parish, Ziedkalne, +371 29252565, 29228580, www.berkenesmuiza.lv

- ▶ One of the oldest small manors in Zemgale – located in a picturesque place on the bank of river Svēte;
- ▶ Here you can find out everything about the life in the manor in the late 19th century and hear the stories about the rebirth of the manor in the 21st century;
- ▶ Harmonious recreation awaits the guests of Berķene Manor: accommodation in the house of the manor lord or the newly built residential house.

81 Lielvircava manor *

Platonas parish, Lielvircava, +371 22024127, 28758947

- ▶ The lord house of the manor was built from 1803 to 1808 in the place of the old castle, it was built by the baron Klopman, the later owners of the manor were the Hahn family;
- ▶ Since 1924 until 1980 the manor houses a school;
- ▶ The manor offers a tour guided by the baroness Elizabeth von Hahn, the stories about the history of fashion and a collection of 19th century costumes.



Scan with
Overly and
discover
more!

82 Blankenfeld manor *

Vilces parish, Blankenfelde, +371 27810348, www.blankenfeldesmuiza.lv

- ▶ The manor buildings have obtained their present look in the 19th century, it is characterized by richness of small architectural forms that are rare in Latvia – carriage gates, small pavilions etc.;
- ▶ The manor has hosted the king of France Louis XVIII twice;
- ▶ Nowadays, the manor stable holds a bell museum, the park has been restored with its pride – and elder tree – whose berries are used to produce delicious treats that are available for tasting.



188 Abgunste manor *

Zajenieku parish., +371 29393131, 28373711 www.abgunste.lv

- ▶ Abgunste Manor was built around the 1780s, owned by Palen's family; in the start of 20th century here was primary school, later apartments and shop;
- ▶ Today the manor has turned into a place of creativity for all kinds of arts, culture, contemporary design, events, accommodation and celebration of life;
- ▶ In the manor are available workshops for ceramists, textile artists, craftsmen and here has made the biggest ceramic kiln in Latvia.



83 **Stalģene manor ***

Jaunsvirlaukas parish, Stalģene,
+371 26383129, 29199324

- ▶ The manor complex was formed at the end of the 18th century, the manor was built in a classical style by the design of the architect S. Jensens;
- ▶ Since the 30ies of the 20th century the manor building has been adapted for the needs of a school;
- ▶ The castle cellar houses the Jaunsvirlauka parish local history museum, while the former Servant house holds the parish cultural center "Līdumi".



TOURIST SITES

* Please, book a visit

84 **Christmas Battle Museum, the Latvian War Museum branch**

Valgundes parish, "Mangali", +371 28349259, 67228147, www.karamuzejs.lv

- ▶ Exposition on the legendary Christmas battles during the First World War;
- ▶ The museum holds a reconstruction of a fortification system section in its authentic location – a German rampart, the only object of this kind in the Baltics;
- ▶ There is 7.2 km long educational trail which leads along the route of attack of the Latvian 1st Riflemen Brigade on 5 January 1917.



85 **Ģederts Eliass family home "Zīlēni" ***

Platones parish, Poki, +371 26547117

- ▶ The native home of the notable Latvian painter Ģ. Eliass – see the reproductions;
- ▶ Next to the house there is the Zīlēni ash tree – the thickest ash tree in the Baltics.





CHURCHES AND MONASTERIES

86 The branch of the Riga Holy Trinity Sergiy women's monastery (Monastery of Valgunde)

Valgundes parish, +371 63085215, +371 63085244

- ▶ The beginnings of the monastery in Valgunde dates back to 1894;
- ▶ The territory of the monastery includes the Transfiguration of Christ Church, the Church of Jānis Trepnieks and a chapel with a significant collection of icons;
- ▶ Currently, there are about fifty sisters living in the monastery.



87 Lielvircava Lutheran Church

Platones parish, Lielvircava, +371 26547117, 29723404

- ▶ The oldest stone church in Jelgava municipality, built in 1595 and funded by the owners of the Lielvircava manor baron Klopman;
- ▶ The church suffered heavily during the Second World War;
- ▶ In 2002 significant renovation work on the interior of the church was carried out.



88 Zaļenieki Lutheran Church

Zaļenieku parish, +371 26747240

- ▶ The current church building was completed in 1872;
- ▶ The largest bell in Jelgava municipality is located in the church tower;
- ▶ The church is furnished in dark oak and its pipe organ was built in 1862.



89 Staļģene St. Virgin Mary Church (the Amber chapel)

Jaunsvirlaukas parish, Šauvas, +371 29199324

- ▶ The church was built in 1998 for the means donated in Germany and is open to all confessions;
- ▶ The main element of the church interior is the amber cross.

90 Sesava Lutheran Church

Elejas parish, +371 28261210

- ▶ The church was built in 1633;
- ▶ The church has features characteristic to Courland churches – simple exterior and decorative interior finishing;
- ▶ One of the oldest organs in Zemgale – built from 1856 to 1860.



91 Līvbērze Catholic Church

Līvbērzes parish, +371 29413174

- ▶ The only wooden church in Jelgava district, built in 1684;
- ▶ Originally built as a Lutheran church, but it became a Catholic church in the 18th century when the Līvbērze manor baron Leaven embraced Catholicism;
- ▶ The church interior consists of 17th and 18th art monuments of national importance – altar, pulpit, ledge painting, the crown of the tower.



MONUMENTS AND MEMORIAL SITES

92 Ložmetējkalns in Tīrelpurvs

Valgundes parish

- ▶ A commemorative symbol of the heroism of Latvian riflemen and a unique evidence of the battles that took place during the First World War;
- ▶ Includes a 27m high wooden viewing tower with opens up the surrounding forest scenery (during the time of reconstruction, Tower closed for visitors until the spring 2018).



93 Monuments of the Mūrmuiža Battle and Swedish Soldiers

Vilces parish, Mūrmuiža

In 1935 and 1991 monuments were erected in the locations of the Mūrmuiža battle where in 1705 during the Great Northern War the Swedish troops overcame the significantly larger Russian army.

94 Monument to Liberators of Jelgava

Svētes parish, next sto Svēte Elementary school

Raised in honor of Daugavgrīva National Guard who stopped the attack of the German army on Jelgava in 1915.



OPEN COUNTRY FARMS*

* Please, book a visit

95 Ostrich farm "Mazzariņi" *

Glūdas parish, Nākotne, +371 26702347, 29134788, www.ratites.lv

An ostrich farm with more than 50 representatives of Australian, African and South American ostrich species.



Scan with
Overly and
discover
more!

189 Farm "Vilki" *

Svētes parish, "Vilki",
+371 26153697, 28378543

During the walk in the arboretum or the farmland discover around 1000 different plants – that are characteristic of the Latvian landscape and some that are not.

96 Deer Garden "Buku audzētava" *

Valgundes parish, +371 29191980,
www.bukuaudzetava.lv

A large deer garden with hundreds of red deer, fallow deer and mouflon.



97 Farm "At Uncle Garyk" *

Valgundes parish, "Kulbiņas", +371 22837247, 29625229

A small home zoo with farm, wild and exotic animals.

98 Mālkalni Family Farm "Blūdži" *

Sesavas parish, "Blūdži", +371 27114820, 24818456

Tasting of fresh cheese, bread, vegetable salad and preserved made at the farm.



99 "Peppermint House"

Vilces parish, "Terēni", +371 26394062, 26199825

Enjoy teas and peppermint products from variety of locally grown peppermint species.



100 Līga's Honey *

Virčavas parish, "Mucenieki", +371 29110940, 26189710
www.ligasmedus.lv

A visit to bee apiaries with the beekeeper to learn more about the life of the bees and understand the honey extraction process.

101 Svēte Bakery *

Svētes parish, "Vecūdri", +371 20001818,
www.svetes.lv

- ▶ Biological bakery that works in accordance with the ancient baking traditions, a shop;
- ▶ You can book participation to the bread making process with the master baker.



102 Winery "Ābelītes" *

Zaļenieku parish, "Ābelītes", +371 20133456, 25547441,
www.abelites.lv

- ▶ Guided tour of the winery, wine tasting and viewing of a decorative garden.



ARTISANRY

* Please, book a visit

103 Craft Center "Līve" *

Līvberzes parish, Jelgavas iela 4a, +371 26749894

Weaving, crochet, pearl craft and other handicraft training, while learning about the Latvian ethnographic heritage.

104 Ceramic Workshop – Svēte Craft Center *

Svētes parish, Lielsvētes iela 18/8, +371 26003899

Characteristic Zemgale pottery, practical lessons in learning the craft of a potter.

105 Woodworking Workshop "Amatnieki" *

Sesavas parish, "Amatnieki", +371 26892959,
www.kocinieks.lv

Woodworking process from a spoon to a house, opportunity to observe the process of basket weaving.

106 Craft Center "Jaunlīdumi" *

Jaunsvirlaukas parish, Dzirnietki, +371 26383129, 29199324

Practical workshop in leather crafts and woodworking, opportunity to purchase the works of the artisans.





NATURE

107 Natural Park “Svēte flood plains”

Līvbērzes un Valgundes parish, +371 63005447

- ▶ The most important place of rest and feeding for the spring migrant waterfowl in Zemgale, formed in the floodplains of Svēte;
- ▶ In spring here gather thousands of birds, mainly geese, ducks, swans and waders.

108 Nature Park “Vilce”

Vilces parish, +371 26351169, 28346682

- ▶ Nature park with a hilly terrain – uncharacteristic for Zemgale;
- ▶ Baron’s trail, Lielmāte spring, zemgaļi castle mound with a viewing platform, Rukūze and Vilce river bluff with sandstone detritions, Rabbit meadow with landscaped leisure spots;
- ▶ With prior booking guided tours are available.

109 Ķemeri Moorland

Valgundes parish, +371 26424972, 67730078,
www.kemerunacionalaisparks.lv

- ▶ Part of the Ķemeri National Park where one can observe untouched nature and restored high marsh habitats;
- ▶ With prior booking you can walk in the moorland with a guide to learn more about the processes of marsh development and natural diversity.



RECREATION AND SPORTS

Landscaped water resorts

Stops for accommodating boating tourists, campfire site and a place to pitch a tent:

- 110 On the bank of Lielupe – Jaunsvirlaukas parish, Staļģene.
- 111 On the bank of Svēte – Līvbērze parish, near Apiņu bridge.

Fishing

- 112 “Grantiņi”, Svētes parish, “Grantiņi 1”, +371 26446422, 28602267,
www.granticamp.lv
- 113 “Kaupēna dzirnavas”, Zaļenieku parish, +371 29263768, 26551259
- 114 “Upmāļi”, Vilces parish, +371 29237149, www.upmali.lv

Horse Riding

- 115 “Reinas zirgi”, Lielplatones parish, +371 26378639
- 117 Ķirpju stāļi, Līvbērzes parish., Baltās mājas, +371 22848459

118 Recreation and Sports Center “Līgotnes”

Svētes parish, “Līgotnes”, +371 26399946, 28660603

A place for recreation, entertainment and sporting events for families with children, camps, picnics and sports games.



WHERE TO EAT?

- 120** Cafe “Zemnieka cienasts”, Jaunsvirlaukas parish, Rīga – Šauļi 43.km, +371 63058443, 20455402, www.lici.lv
- 121** Cafe “Pūteļkrogs”, Zaļenieku parish, “Pūteļu krejotava”, +371 63011900, 29255010, www.puteli.lv
- 122** Restaurant – bistro “Aitiņlauvas”, Valgundes parish, Rīga – Liepāja 22.km, +371 29160393, www.aitinlauvas.lv
- 112** Cafe “Grantiņi”, Svētes parish, “Grantiņi 1”, +371 28602267, www.grantinicamp.lv
- 123** Cafe “Sapnis”, Jaunsvirlaukas parish, Staļģene, „Kraujas”, +371 26637101, 29165412
- 124** Cafe “Piramīda”, Elejas parish, Bauskas iela 3, +371 26866206



WHERE TO SLEEP?

- 112** Recreation complex “Grantiņi” (37 places) camping cabins, vacation home, hotel-suite, Svētes parish, “Grantiņi 1”, +371 28602267, www.grantinicamp.lv
- 125** “Hotel Senlīči” (34 places), Jaunsvirlaukas parish, +371 20007065, 63058443, www.senlici.lv
- 126** Guest house “Naktsmājiņa” (9 places), Jaunsvirlaukas parish, +371 20455402, 29204514, www.lici.lv
- 82** Blankenfelde manor hotel (8 places), Vilces parish, +371 27810348, www.blankenfeldesmuiza.lv
- 127** Guest house “Guntmārites” (16 places), Valgundes parish, +371 26164173, 29444859, www.guntmarites.lv
- 128** Guest house “Pūteļkrogs” (29 places), Zaļenieku parish, +371 63011900, 29255010, www.puteli.lv
- 129** Guest house “Aitiņlauvas” (19 places), Valgundes parish, Rīga – Liepāja 22.km, +371 29160393, www.aitinlauvas.lv
- 130** Guest house “Zaļie atvari” (60 places), Līvberzes parish, “Atvari”, +371 29161683, www.zalieatvari.lv
- 131** Guest house “Galzemji” (80 places), Jaunsvirlaukas parish, Dzirnietki, +371 29188408, www.alexs.lv
- 113** Guest house “Kaupēna Dzirnavas” (38 places), Zaļenieku parish, +371 29263768, 26551259
- 132** Guest house “Branguļi” (15 places), Valgundes parish, Valgunde, +371 28772324, 25918171
- 114** Guest house “Upmali” (20 places), Vilces parish, +371 29237149, www.upmali.lv
- 133** Zaļenieku Commercial and Crafts Secondary School Dormitories (150 places), Zaļenieku parish, Zaļenieki, +371 63074250, 29273809, www.zav.lv
- 134** Hostel “Jaunlīdumi” (42 places), Jaunsvirlaukas parish, Dzirnietki, +371 29199324, www.lidumi.lv
- 190** Guest House “Upeslīči” (24 places), Līvberzes parish, +371 28117861, www.upesliciatputai.lv
- 187** Berķene Manor (10 places), Vilces places, Ziedkalne, +371 29252565, 29228580, www.berkenesmuiza.lv
- 188** Abgunste manor (65 places), Zaļenieku parish, +371 29393131, 28373711, www.abgunste.lv

Ozolnieki county

- ▶ Population: 10 600
- ▶ Area – 286 km²
- ▶ Ozolnieki municipality includes 3 parishes – Ozolnieku, Cenu and Salgales parish



Scan with
Overly and
discover
more!

www.ozolnieki.lv



MUSEUMS AND EXPOSITIONS

** Please, book a visit*

135 The birth home of the first president of the Republic of Latvia Jānis Čakste “Auči” *

Salgales parish, +371 26392154



- ▶ The “Auči” property was built in the 1930s and since 1995 it once again is owned by the Čakste family;
- ▶ There is an exposition on Jānis Čakste and the destinies of his family.

136

Memorial house of Edvarts Virza and Elza Stērste “Billītes” *

Salgales parish, +371 29299790

- ▶ “Billītes” was the home of Latvian writers Edvarts Virza and Elza Stērste;
- ▶ The property is managed by the heirs to the family, it holds and exposition on the lives and creative work of the authors.



CHURCHES, MONUMENTS AND MEMORIAL SITES



138 Tetele Tower and Park

Cenu parish, Tetele

The tower was built on the second half of the 19th century as artificial castle ruins on the bank of Lielupe next to Tetele elementary school and park.

139 Vareļi Monument

Salgales parish

- ▶ Dedicated to the fallen cadets of Latvian War School in the battles against Bermontian forces in 1919;
- ▶ It was first revealed in 1935 based on the design of the artist J. Borkovskis, it was blown up in 1951 and renewed on 17 November 1990.

140 Monument to the Fallen Soldiers of Riga 6th Infantry Regiment

Cenu parish, Skuju Elementary school

Dedicated to the fall and missing soldiers of Riga 6th Infantry Regiment in the battles against the Bermontians.

141 Dalbe Lutheran Church

Cenu parish, Dalbe, +371 28261210

- ▶ The church was built in 1869 based on the design of the architect N. Gusevičs;
- ▶ In 1926 the painting by the artist A. Annuss “Christ blesses the children” was made the altarpiece of the church.



OPEN COUNTRY FARMS *

* Please, book a visit

142 Mini zoo "Lauku sēta" *

Cenu parish, Brankas, +371 27171712,
www.zoolaukusesta.lv

A place for a peaceful stroll with an opportunity to see farm animals – ponies, donkeys, llamas, mini goats, mini sheep, mini pigs and various birds.



143 Goat Farm "Līcīši" *

Cenu parish, +371 26537993, www.licisi.lv

One of the largest goat and milk farms in Latvia, tasting of goat farming products.



144 "The Garlic World" *

Olaines municipality, Olaines parish, Uzvaras līdums, Annas, +371 29206015

Tasting of healthy and creative garlic products made from locally grown garlics.

145 Tree Nursery "Bētras" *

Salgales parish, +371 28662847, 29494883,
www.betras.lv

Tasting of candied quinces and cranberries and syrups, opportunity to purchase various fruit and berry plants and receive advice.

146 Traditional Latvian Farm "Caunītes" *

Cenu parish, +371 26352395, www.caunites.lv

An opportunity to bake a delicious loaf of bread in a wood – fired oven and act in accordance with the seasonal rhythms of Latvian folk traditions and natural developments.





ACTIVE RECREATION AND SPORTS



147 Ozolnieki Rowing Club

Ozolnieki, Kļavu iela 6, +371 23202900,
www.ozolaivas.lv

Canoes, boating routes, expeditions.

148 Ozolnieki Sports Center

Ozolnieki, Stadiona iela 5,
+371 63050516, 26520497

Sports hall, gym, football pitch, 3 streetball pitches, skateboarding area, inventory rental, sauna.

149 Ozo Hall

Ozolnieki, Stadiona iela 5b, +371 63050615,
www.ozohalle.lv

Public ice skating, ice area rental, rental skates, figure skating training, sauna.

150 Health Trail

Ozolnieki

500 meters long path with open-air gym gear.

151 Artificial Hill

Ozolnieki

In winters a 2.5km long ski route is available with mounds and an artificial hill. The track is enlightened.

152 Horse farm "Princis"

Cenu parish, Brankas, +371 26563936, 20206039

Horse Riding, training.

153 Ozolnieki Lake

Ozolnieki, Ozolnieku lake

Children playgrounds, beach, walking and biking trail around the lake.

154 Wakeboarding and Waterskiing track "5 masti"

Ozolnieki, Ozolnieku lake, +371 28366699

Circular cable wakeboarding and waterskiing track.

155 "Sudrablīcis"

Cenu parish, Āne, +371 29183711

Commercial fishing, boat hire.





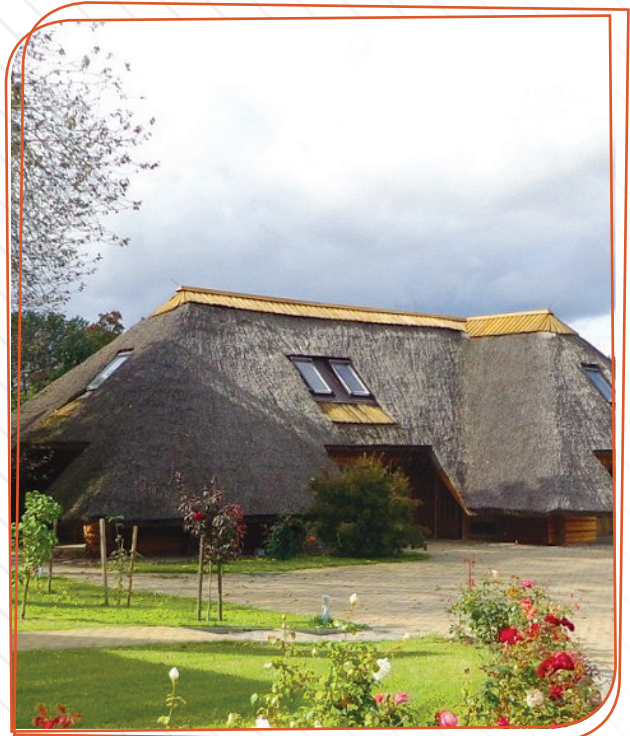
WHERE TO EAT?

- 156 **Restaurant "Agate Hotel"**, Ozolnieki, Stadiona iela 5a +371 25661811, www.agatehwotel.lv
- 157 **Bar "Meka"**, Ozolnieki, Stadiona iela 5a, +371 63050162, 29444403, www.meka.lv
- 158 **Cafe "Centrs"**, Ozolnieki, Rīgas iela 34, +371 63020070, 26532338
- 159 **Kebab shop "Korner Kebab"**, Ozolnieki, Meliorācijas iela 2-1, +371 28122288
- 160 **Cafe – grill house "Talisman"**, Ozolnieki, Rīgas iela 20, +371 27873733, 26549089
- 191 **Drops Pizza**, Ozolnieki, Meliorācijas iela 2, +371 24909820



WHERE TO SLEEP?

- 156 **Hotel "Agate Hotel"** (50 places), Ozolnieki, Skolas iela 16, +371 28684473, www.agatehotel.lv
- 148 **"Ozolnieku sporta centrs" dormitory** (30 places), Ozolnieki, Stadiona iela 5, +371 63050516, 26520497, www.ozolnieki.lv
- 161 **Dormitory "Latvijas Lauku konsultāciju un izglītības centrs"** (50 places), Ozolnieki, Rīgas iela 34, +371 22018583, 63050220, www.llkc.lv
- 162 **Holiday house "Ānes muiža"** (70 places), Cenu parish, Āne, +371 26483712, www.anesmuiza.lv
- 163 **Guest house "Skalbes"** (12 places), Cenu parish, +371 29103477
- 164 **Āne Youth initiative centre hostel** (21 places), Cenu parish, Āne, Celtnieku iela 12, +371 29403169
- 192 **Camp place "Cīzeri"** (tent places), Salgaļes parish, Šalkoņi, +371 26573272





TOURISM SERVICES

Seminar and conference rooms



Jelgava municipality

- 171 **Education, Culture and Sports Center "Avoti"** (100; 200 people), Valgunde, Saules iela 2, +371 28612076
- 172 **Education and activity center "Līdumi"** (35; 200 people), Jaunsvirlaukas parish, Staļģene, +371 29199324
- 173 **Vilce Community Center** (30; 250 people), Vilces parish, +371 20244887
- 174 **Vircava Community Center** (30; 300 people), Vircavas parish, +371 264100851
- 77 **Zaļenieki manor** (30; 100 people), Zaļenieki, +371 63074250, 29433918
- 175 **Zaļenieki Community Center** (60; 250 people), Zaļenieki, +371 29174173

Jelgava

- 1 **Jelgava Holy Trinity Church tower** (40 people) Akadēmijas iela 1, +371 63005445, 63005447
www.tornis.jelgava.lv
 - 2 **Jelgava castle** (50; 500 people), Lielā iela 2, +371 63082101,
www.jelgavaspils.lv
 - 33 **Zemgale Olympic Center** (25 places), Kronvalda iela 24, +371 20365713, 26356449, www.zoc.lv
 - 165 **Zemgales Regional Competence Building Center** (15; 26; 50; 200 places), Svētes iela 33, +371 63082101,
www.zrkac.lv
 - 166 **Fashion house "Tēma"** (25 places), Elektrības iela 5a, +371 29137893
 - 4 **Ģ. Eliass Jelgavas Museum of History and Art** (50 people), Akadēmijas iela 10, +371 63023383, www.jvmm.lv
 - 54 **Bistro "Silva"** (100 people), Driksas iela 7/9, +371 63084899, 29266586, www.bistrosilva.lv
 - 194 **Jēkabnieki Community Center** (10; 50; 200 places), Svētes parish, Jēkabnieki, Straumes iela 5, +371 27234198
- #### Ozolnieki municipality
- 176 **Ozolnieku Community Center** (30; 150 people), Ozolnieki, Rīgas iela 23, +371 63050144, 20311974
 - 161 **Latvian Rural Consultation and Education center** (30; 40 people), Ozolnieki, Rīgas iela 34, +371 26400224, www.lkcc.lv
 - 177 **Āne Community Center** (150 people), Cenu parish, Āne, Celtnieku iela 12b, +371 26121516

Souvenirs and local products

- 167 **Shop “daba”**, Jelgava, Raiņa iela 17, +371 63084395, www.dabadaba.lv
- 184 **Home – producer shop “Amatnieku sēta”**, Jelgava, Lielā iela 5/7, +371 27097555, www.partikasamatnieki.lv
- 168 **Artisanry shop “Daiļrade”**, Jelgava, Akadēmijas iela 4, +371 63082728
- 169 **Shop “Zaļā zeme”**, Jelgava, Raiņa iela 35, +371 23771999
- 170 **Shopping center “Kancelera nams”**, Jelgava, Katoļu iela 7 un Pasta iela 51/7, +371 63011444
- 1 **Jelgava St. Trinity Church Tower**, Jelgava, Akadēmijas iela 1, +371 63005445, www.tornis.jelgava.lv
- 4 **Ģ.Eliass Jelgavas Museum of History and Art**, Jelgava, Akadēmijas iela 10, +371 63023383, www.jvmm.lv
- 193 **Festive Design Studio “Sajūtu Studija – Aspazija”**, Jelgava, Raiņa iela 16, +371 28310830



Taxi

Jelgava taxi service, +371 63083200, 80008066

Taxi services in Jelgava, +371 80008044

Tourist agencies

- 180 **Ekskursija.lv** – travel, bus rental, air travel, ferry tickets and hotel reservations, visas, insurance. Jelgava, Svētes iela 18, +371 63010455, 29490290, www.ekskursija.lv
- 181 **“Noa Tour”** – transport services, tours, travel, guided tours, theatre tickets. Jelgava, Raiņa iela 20-200. kab., +371 63011077, 22314063, www.noatour.lv
- 182 **“Star Tour”** – travel, bus rental, ferry, flight, hotel booking, insurance, visas. T/C “Valdeka”, Jelgava, Rīgas iela 11a, +371 63024240, 27066830, www.startours.lv
- 183 **“N-Travel”** – travel, tours, hotel booking, cruises, bus travel, insurance, visas, charter service. Jelgava, Raiņa iela 17, +371 63021067, www.ntravel.lv



USEFUL INFORMATION

How to get to Jelgava?



By car

Riga-Jelgava: 45 km, highway A8

Lithuania – Jelgava: Highway A8

Bauska – Jelgava: 48 km, highway P103 and A8

Liepāja – Jelgava: 182 km, highway A9

By train

Train “Riga – Jelgava” from Riga Railway Station runs every hour, the duration of the journey is 50 minutes. More information www.pv.lv

By bus

Minibuses “Riga – Jelgava” from Riga International Bus Station runs about four times an hour, the duration of the journey is 55 minutes.

Transport inquiry: www.1188.lv

Public transport in Jelgava

Bus timetables are available at the websites of Jelgava Bus Station homepage www.jap.lv.

Useful telephone numbers

- ▶ Transport inquiry: 1188
- ▶ Emergency medical assistance: 113; +371 63022469
- ▶ Jelgava City municipal police: + 371 63028550
- ▶ State police: 110 or 02
- ▶ State fire and rescue service: 112 or 01
- ▶ Jelgava municipal operational information centre in Jelgava: 8787

Tourist information

1

Jelgavas regional tourism center

Akadēmijas iela 1, Jelgava, +371 63005447, tic@tornis.jelgava.lv,
www.visit.jelgava.lv

178

Lielplatone tourist information point

Lielplatones manor, Lielplatones parish, Jelgavas mun., +371 26611468,
lielplatones.muiza@jelgavasnovads.lv

81

Lielvircava tourist information point

“Lielvircava manor”, Lielvircavas iela 4a, Platones parish, Jelgavas mun.,
+371 22024127, zanda.zarina@jelgavasnovads.lv

179

Vilce tourist information point

“Vilce manor”, Vilces parish, Jelgavas mun., +371 26351169, 63061081,
vilcesmuiza@jelgavasnovads.lv



JELGAVA



MEJAS

MEIJU CEĻA
MIKRORAJONS

SĀTIKSMES IELAS
MIKRORAJONS

Lielupes
palienes
pļavas

Savvaļas
zirgu ganības

MIEZĪTE

GINTERMUIŽA

POGU LAUKI

ŠAULU RAMPĀ

AVENU
CIEMS



Jelgava



JELGAVA

- 1 Jelgava Holy Trinity Church tower
- 2 Jelgava Palace
- 3 Rundāle Palace Museum exhibition "Vault of the Dukes of Courland"
- 4 Jelgava History and Art Museum of Ģederts Eliass
- 5 Memorial Museum of Ādolfs Alunāns
- 6 Firefighting exhibition
- 7 Museum of the "Ģintermuiža" Hospital
- 8 Jelgava Exhibition of Latvian Railway History Museum
- 9 St. Anna's Lutheran Cathedral
- 10 Cathedral of the Immaculate Virgin Mary
- 11 St. Simeon's and St. Anna's Orthodox Cathedral
- 12 St. John's Lutheran Church
- 13 Jelgava Dormition of the Most-holy Mother of God Orthodox Church
- 14 Lielupe floodland meadows and wild horses
- 15 Parks and green spaces in Jelgava
- 16 Mitava Bridge and the promenade of J. Čakstes Boulevard
- 17 Post Island
- 18 Lielupe Bank promenade
- 19 Monument to the Liberators of Jelgava "Lāčplēšis"
- 20 Sculpture-fountain "Jelgava's Student"
- 21 Monument to Jānis Čakste, the first president of Latvia
- 22 Block of Vecpilsētas Street and Dobeles gates
- 23 Love Alley
- 24 Memorial Sign in Honour of the Singer Nora Bumbiere
- 25 Monument to Ādolfs Alunāns
- 26 Svētbirze (Sacred birch grove)
- 27 Jelgava Culture Centre
- 28 Culture House "Rota"
- 29 Jelgava Student Theatre
- 30 Hard candy workshop
- 31 Jelgava Printing House
- 32 Polymer pipe manufacturer Evopipes
- 33 Fortum biomass cogeneration plant
- 34 Zemgale Olympic Centre
- 35 Recreation and Sports centre "Zemgale"
- 36 Jelgava Ice hall
- 37 "Pārlielupes pirtnieki"
- 38 Sports and Recreation Complex "Rullītis"
- 39 Bicycle rental
- 40 "Pepijas velomānija"
- 41 Health Center and Fitness Club "Fitland"
- 42 Tennis Club "Jelgava"
- 43 Paintball "Rullītis"
- 43 A-Z Boulings
- 185 Children and Youth Camp "Lediņi"
- 186 Bio Ritmi Sports Club
- 44 Boat tours on the Lielupe and Driksa Rivers
- 46 Stand up paddle board rental
- 47 Jelgava Yacht Club
- 48 Paddle boat and boat rental on the Post Island
- 37 "Pārlielupes pirtnieki"
- 38 Wakepark "Rullītis"
- 49 Beach on the right bank of the river near the promenade
- 50 Beach on the left bank of the river, on the Post Island
- 1 Restorāns "La tour de Marie"
- 45 Café - bistro "Salmu krogs"
- 51 Restaurant and Café "Parks"
- 52 Restaurant "Madara"
- 53 Restaurant "Pilsētas elpa"
- 54 Bistro and bakery "Silva"
- 55 Lunch restaurant "Otto"
- 56 Tavern "Istaba"
- 57 "Kreklu krogs"
- 58 Café-cocktail bar "Chocolate & Pepper"
- 59 Bar-restaurant "Plate"
- 60 Bar "Saulus krogs"
- 61 Tavern "Ceplis"
- 62 Café "Pie mednieka"
- 63 Tea house "Silva"
- 64 Restaurant-pizzeria "Čili Pica"
- 65 Pizzeria "Picu darbnīca"
- 67 Italian pizzeria "Rosso Pizza"
- 68 Express restaurant "Namma"
- 69 Cake studio "Tarte"
- 70 Fast food restaurant "McDonald's"
- 71 Fast food restaurant "Hesburger"
- 72 Hotel "Jelgava"
- 73 Hotel "Zemgale"
- 66 Hotel "Brize AM"
- 74 Motel "Akva"
- 75 Youth hostel - LLU 8. Dienesta viesnīca
- 165 Zemgales Reģionālā Kompetences Būvniecības Centrs
- 166 Fashion house "Tēma"
- 167 Shop "daba"
- 184 Home-producer shop "Pārtikas amatnieku sēta"
- 168 Artisanry shop "Dailrade"
- 169 Shop "Zaļā zeme"
- 170 Shopping center "Kandera nams"
- 193 Festive Design Studio "Sajūtu Studija - Aspazija"
- 180 Ekspursija.lv
- 181 "Noa Tour"
- 182 "Star Tour"
- 183 "N-Travel"
- 1 Jelgava Regional Tourism Centre

JELGAVA COUNTY

- 76 Eleja manor park and Tea house
- 77 Zaļenieki (The Green) Manor
- 78 Vilce manor
- 79 Lielplatone manor
- 80 Vircava manor and park
- 187 Berkene Manor
- 81 Lielvircava manor
- 82 Blankenfeld manor
- 188 Abgunste manor
- 83 Stalģene manor
- 84 Christmas Battle Museum, the Latvian War Museum branch
- 85 Ģederts Eliass family home "Zilēni"
- 86 The branch of the Riga Holy Trinity Sergiy women's monastery (Monastery of Valgunde)
- 87 Lielvircava Lutheran Church
- 88 Zaļenieki Lutheran Church
- 89 Stalģene St. Virgin Mary Church (the Amber chapel)
- 90 Sesava Lutheran Church
- 91 Līvberze Catholic Church
- 92 Ložmetājkalns in Tīrelpurvs
- 93 Monuments of the Mūrmuiža Battle and Swedish Soldiers
- 94 Monument to Liberators of Jelgava
- 95 Ostrich farm "Mazzariņi"
- 189 Farm "Vilki"
- 96 Deer Garden "Buku audzētava"
- 97 Farm "At Uncle Garyk"
- 98 Mālkalni Family Farm "Blūdži"
- 99 "Peppermint House"
- 100 Liga's Honey
- 101 Svēte Bakery
- 102 Winery "Ābelītes"
- 103 Craft Center "Līve"
- 104 Ceramic Workshop – Svēte Craft Center
- 105 Woodworking Workshop "Amatnieki"
- 106 Craft Center "Jaunlīdumi"
- 107 Natural Park "Svēte flood plains"
- 108 Nature Park "Vilce"
- 109 Ķemeri Moorland
- 110 Landscaped water resort – Stalģene
- 111 Landscaped water resort – Līvberze parish
- 112 "Grantiņi"
- 113 "Kaupēna dzirnavas"
- 114 "Upmaļi"
- 115 "Reinas zirgi"
- 117 "Ķirpju stāļi"
- 118 A place for active leisure and sports "Līgotnes"
- 120 Cafe "Zemnieka cienasts"
- 121 Cafe "Pūtelkrogs"
- 122 Restaurant-bistro "Aitiņlauvas"
- 112 Cafe "Grantiņi"
- 123 Cafe "Sapnis"
- 124 Cafe "Piramīda"
- 112 Recreation complex "Grantiņi"
- 125 "Hotel Senlīči"
- 126 Guest house "Naktsmājiņa"
- 82 Blankenfelde manor hotel
- 127 Guest house "Guntmārites"
- 128 Guest house "Pūtelkrogs"
- 129 Guest house "Aitiņlauvas"
- 130 Guest house "Zaļie atvari"
- 131 Guest house "Galzemji"
- 113 Guest house "Kaupēna Dzirnavas"
- 132 Guest house "Branguļi"
- 114 Guest house "Upmaļi"
- 133 Zaļenieku Commercial and Crafts Secondary School Dormitories
- 134 Hostel "Jaunlīdumi"
- 190 Guest House "Upeslīči"
- 187 Berkene Manor
- 188 Abgunste manor
- 171 Education, Culture and Sports Center "Avoti"
- 172 Education and activity center "Līdumi"
- 173 Vilce Community Center
- 174 Vircava Community Center
- 77 Zaļenieki manor
- 175 Zaļenieki Community Center
- 194 Jēkabnieki Community Center
- 178 Lielplatone tourist information point
- 81 Lielvircava tourist information point
- 179 Vilce tourist information point

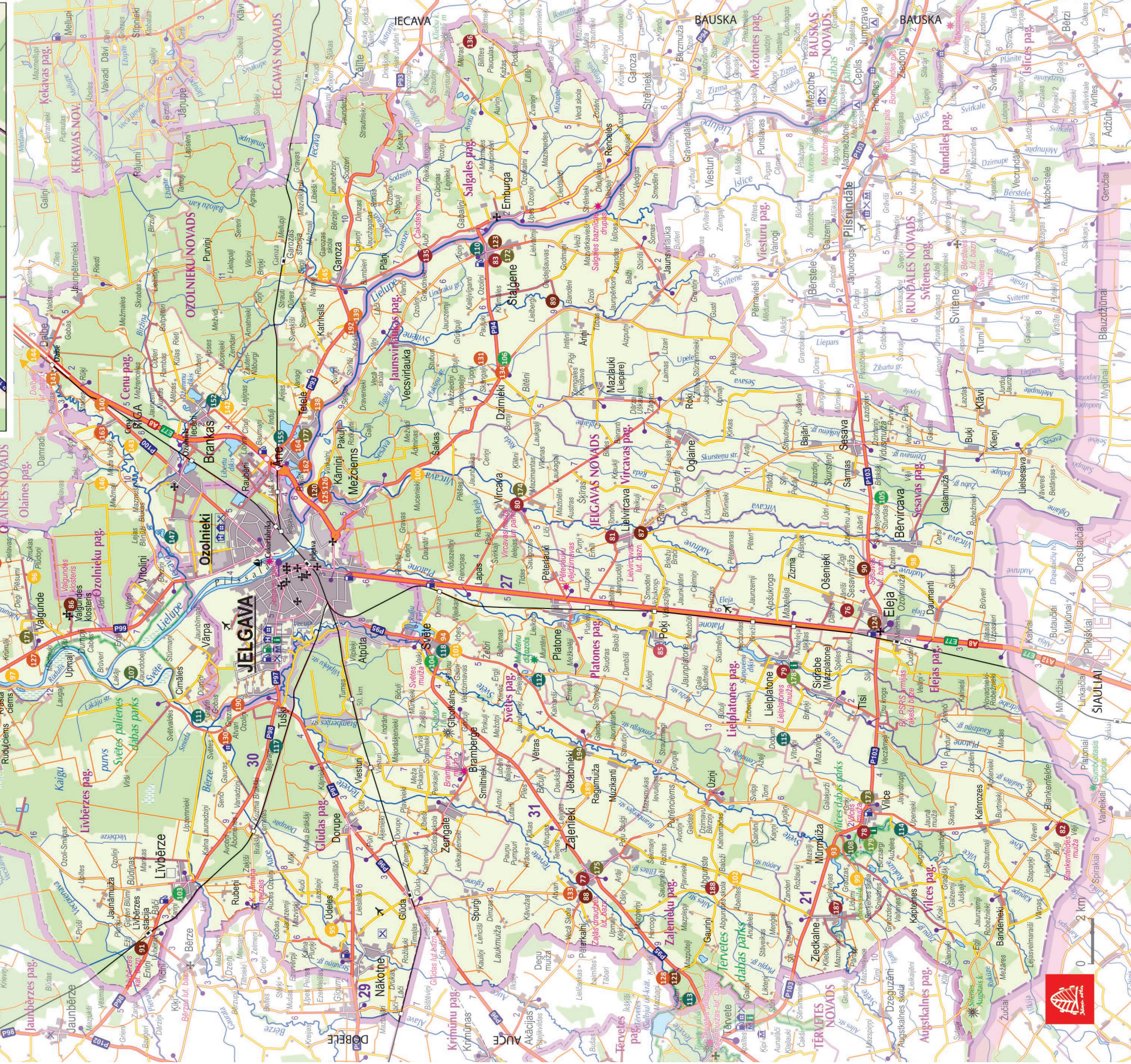
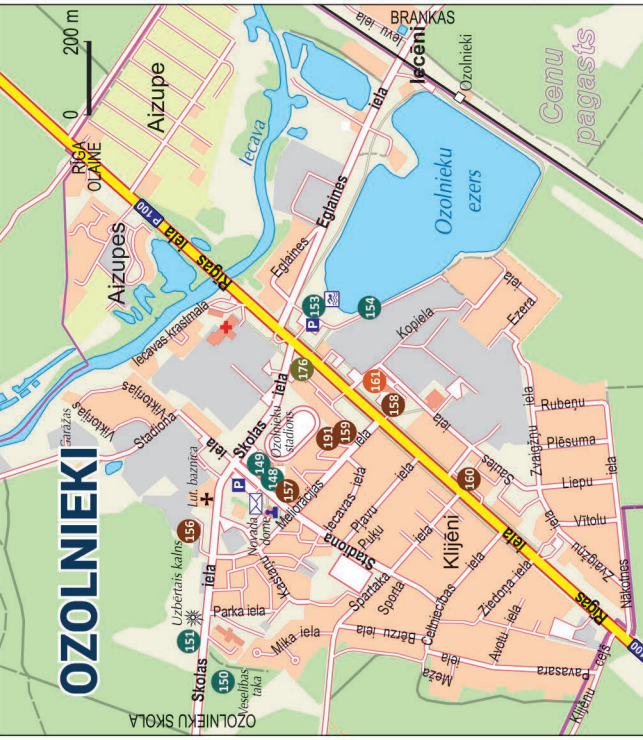
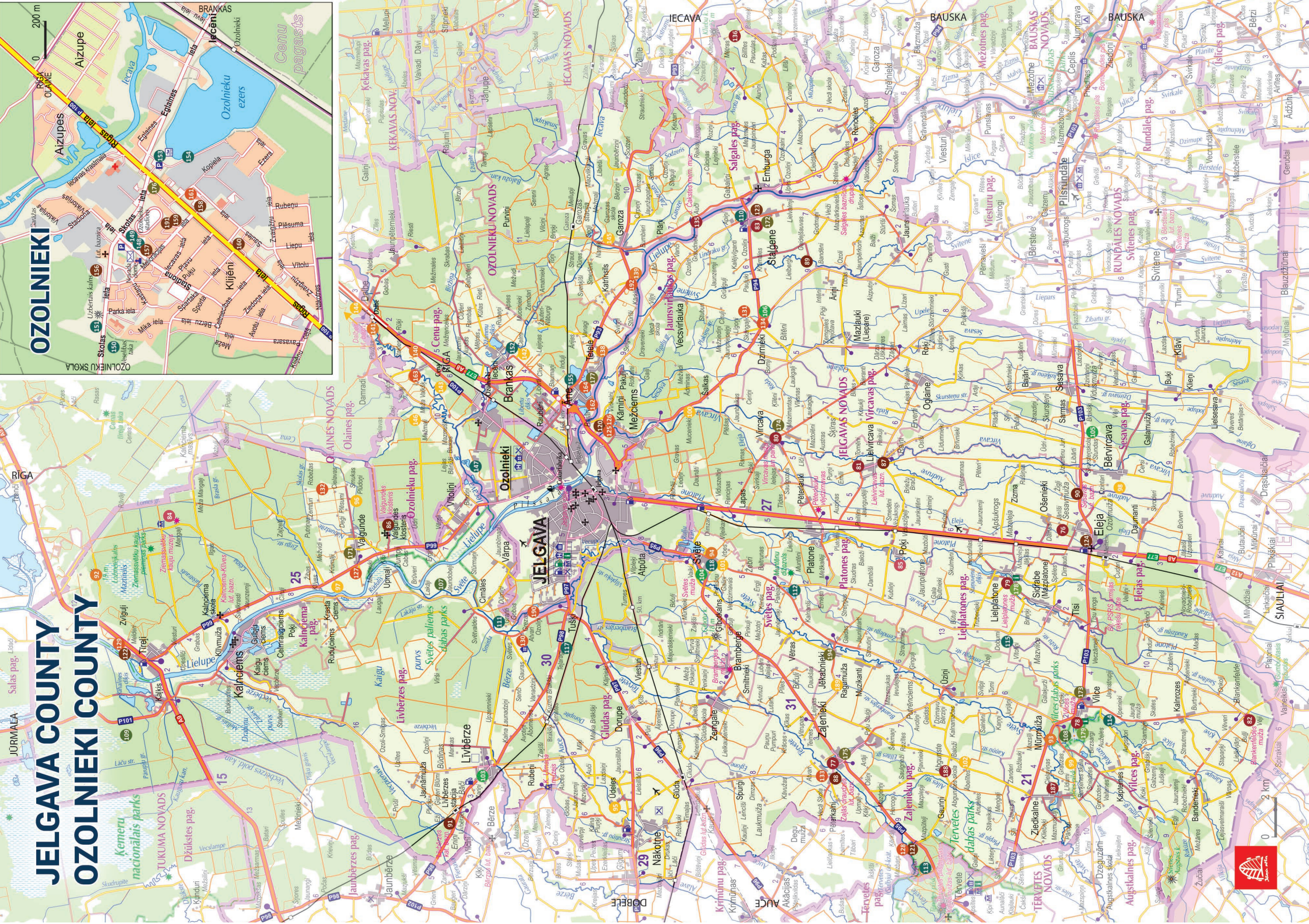
OZOLNIEKI COUNTY



- 135 The birth home of the first president of the Republic of Latvia Jānis Čakste
- 136 "Auči"Edvarta Virzas un Elzas Stērstes memoriālā māja "Billītes"
- 137 Memorial house of Edvarts Virza and Elza Stērste "Billītes"
- 138 Tetele Tower and Park
- 139 Vareļi Monument
- 140 Monument to the Fallen Soldiers of Riga 6th Infantry Regiment
- 141 Dalbe Lutheran Church
- 142 Mini zoo "Lauku sēta"
- 143 Goat Farm "Līcīši"
- 144 "The Garlic World"
- 145 Tree Nursery "Bētras"
- 146 Farm House "Caunītes"
- 147 Ozolnieki Rowing Club
- 148 Ozolnieki Sports Center
- 149 Ozo Hall
- 150 Health Trail
- 151 Artificial Hill
- 152 Horse farm "Princis"
- 153 Ozolnieki Lake
- 154 Wakeboarding and Waterskiing track "S masti"
- 155 "Sudrablīcis"
- 156 Hotel "Agate Hotel"
- 157 Bar "Meka"
- 158 Cafe "Centrs"
- 159 Kebab shop "Korner Kebab"
- 160 Cafe - grill house "Talisman"
- 191 Drops Pizza
- 156 Hotel "Agate Hotel"
- 148 "Ozolnieku sporta centrs"
- 161 "Latvijas Lauku konsultāciju un izglītības centrs" dormitory
- 162 Holiday house "Ānes muīža"
- 163 Guest house "Skalbes"
- 164 Āne Youth initiative centre hostel
- 192 Camp place "Cizeri"
- 176 Ozolnieku Community Center
- 177 Āne Community Center

JELGAVA COUNTY

OSZOLNIEKI COUNTY





MAJOR EVENTS AND FESTIVALS

January

CHRISTMAS BATTLE MEMORIAL EVENTS (13.01.2018)
Every year at the beginning of January around Ložmetējkalns Christmas battle memorial events are held commemorating the heroism of Latvian riflemen during the First World War with solemn moments, battle reconstruction, riflemen songs and campfires.

February

THE 20TH INTERNATIONAL ICE SCULPTURE FESTIVAL (09-11.02.2018) each year brings together artists from all over to world to create artworks from more than 90 tonnes of ice. The festival surprises with light and multimedia shows, musical performances and a varied entertainment programme for the whole family.

May

AMATEUR THEATRE FESTIVAL "ZELTA ZĪLE 2018" (11.- 12.05.2018.) Opportunity to enjoy different kind of genre performances by amateur theater in Ozolnieki County.

JELGAVA REGIONAL FESTIVAL (19.05.2018.) Artisans and home-producers, traders and entertainers gather in Eleja manor park to create a colorful and positive emotional surprise to all visitors and let them enjoy various cultural events.

JELGAVA CITY FESTIVAL (25.05 - 27.05.2018) is celebrated by family activities and extensive cultural and entertainment program. The highlight of the festival is the longest city parade in Latvia which surprised by gathering the fun, witty and colourful residents of Jelgava.

June

THE 12TH INTERNATIONAL SAND SCULPTURE FESTIVAL (09. - 10.06.2018) amazes with unique works of sand art. The visitors of the largest sand sculpture park in the Baltic States can view beautiful and impressively sized sculptures made from 900 tonnes of sand.



July

OZOLNIEKI DISTRICT FESTIVAL (28.07.2018) throughout the day invites the residents and guests to enjoy exciting cultural, entertainment and recreational possibilities near by Ozolnieki Lake.

LATVIAN BATH AND HEALTH FESTIVAL (27.-29.07.2018.) – opportunity to find out new knowledges about sauna traditions, introduce and enjoy healing rituals for body and soul. Event traditionally take place in Jelgavas mun., Glūdas parish, Nākotne.

August

THE XVIII LATVIAN MILK, BREAD AND HONEY FESTIVAL / XVI MILK CARTON REGATTA (25.08.2018) is the most delicious festival of the year where Jelgava offers various interpretations of the milk, bread and honey products produced all over Latvia. Everyone is welcome to join in fun culinary contests and follow the always-exciting milk carton regatta.

September

METAL FESTIVAL IN JELGAVA (08.09.2018) is an extensive educational and learning festival which allows to enjoy art and culture and learn more about education, career and job opportunities in steel industry. The festivals includes welding contests, various demonstrations, seminars, creative workshops for children and youth.

HARVEST FESTIVAL IN JELGAVA REGION (29.09.2018) brings together farmers, artisans, home-producers and visitors from Jelgava region and nearby area for a fare next to the cafe "Zemnieka cienasts" in Jaunsvirlaukas parish to have a colourful celebration of the end of the harvest.

October

NIGHT OF LEGENDS. JELGAVA COUNTY MANORS. (27.10.2018.) Within the Night of Legends many manors in Latvia have prepared special programme to surprise and entertain their visitors. Also the manors of Jelgava neighbourhood open their doors to share their unique stories, secrets and delights.



Jelgava Regional Tourism Centre

Akadēmijas iela 1, Jelgava
+371 63005447
tic@tornis.jelgava.lv
www.visit.jelgava.lv
f JelgavaTIC
@VisitJelgava
VisitJelgava

Publisher: Jelgava City Municipal Authority "Jelgava Regional Tourism Centre"

Photo: archive of Jelgava Regional Tourism Centre, archives of tourism objects

Maps: LTD "Jāņa sēta Map Publishers"

Printed by: SIA "Veiters korporācija"

Publication year: 2018

